



US-CS3  
Heartland Farm  
"Lamoka"



US-CS2  
Tri-County School Forest  
"Pine"

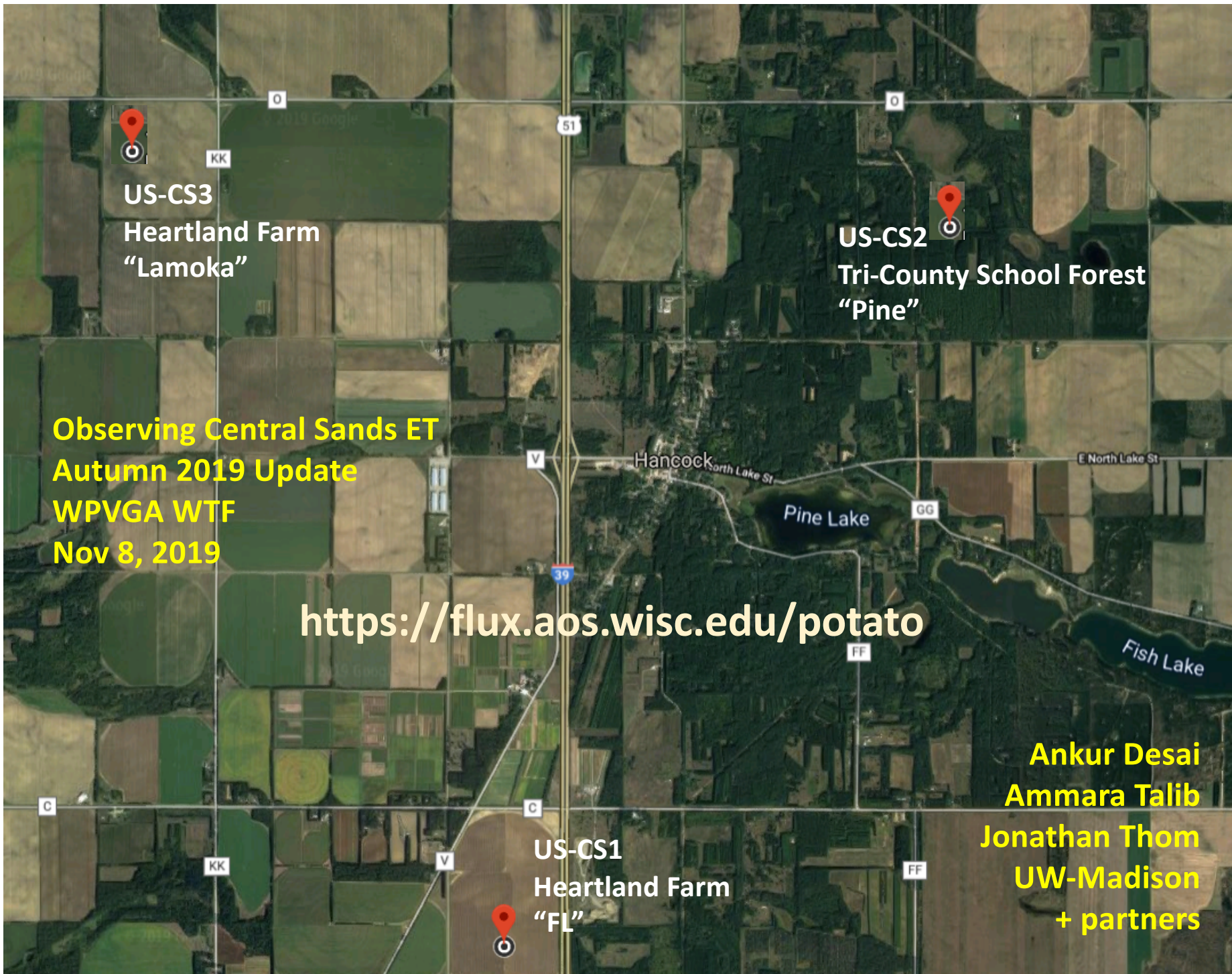
Observing Central Sands ET  
Autumn 2019 Update  
WPVGA WTF  
Nov 8, 2019

<https://flux.aos.wisc.edu/potato>

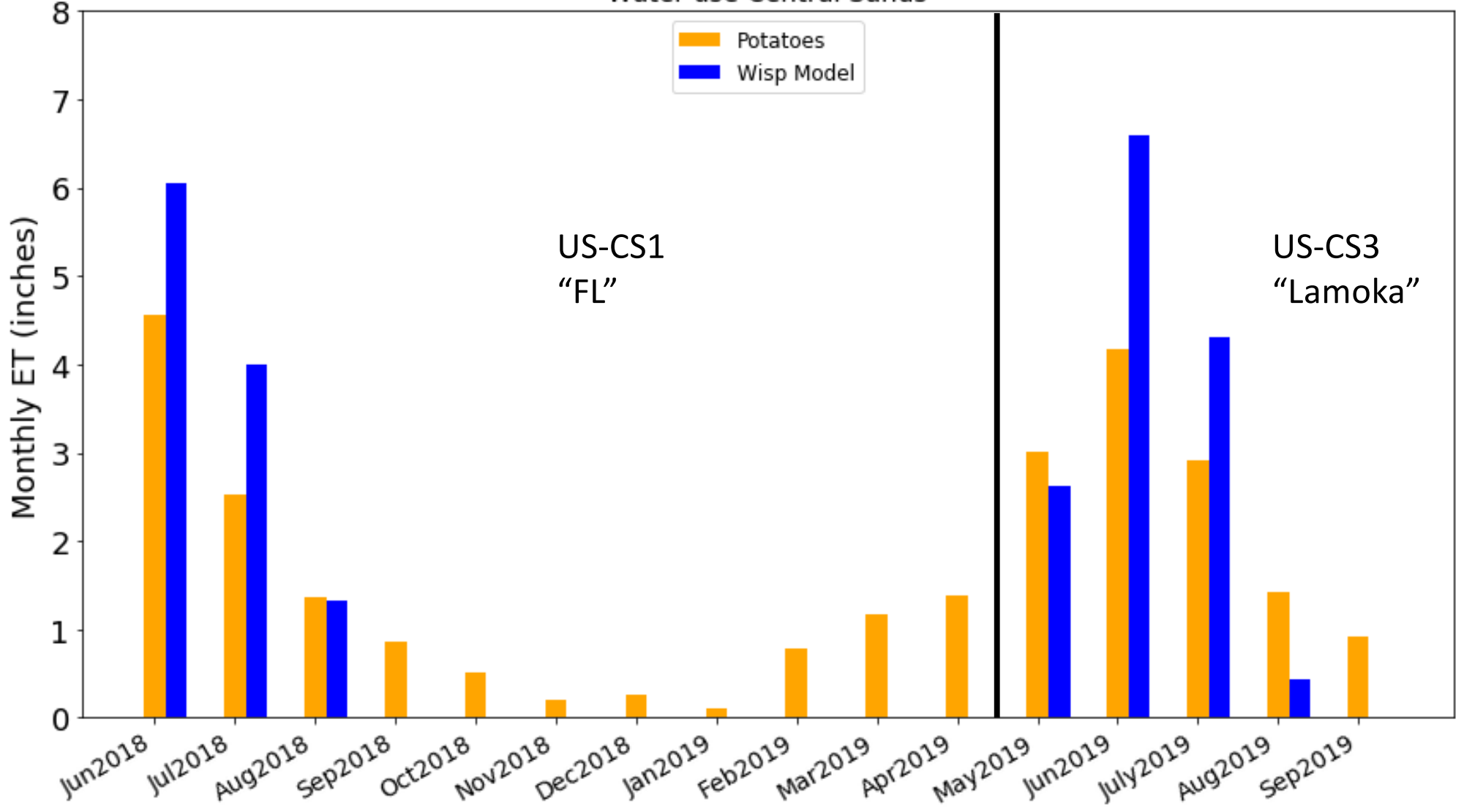


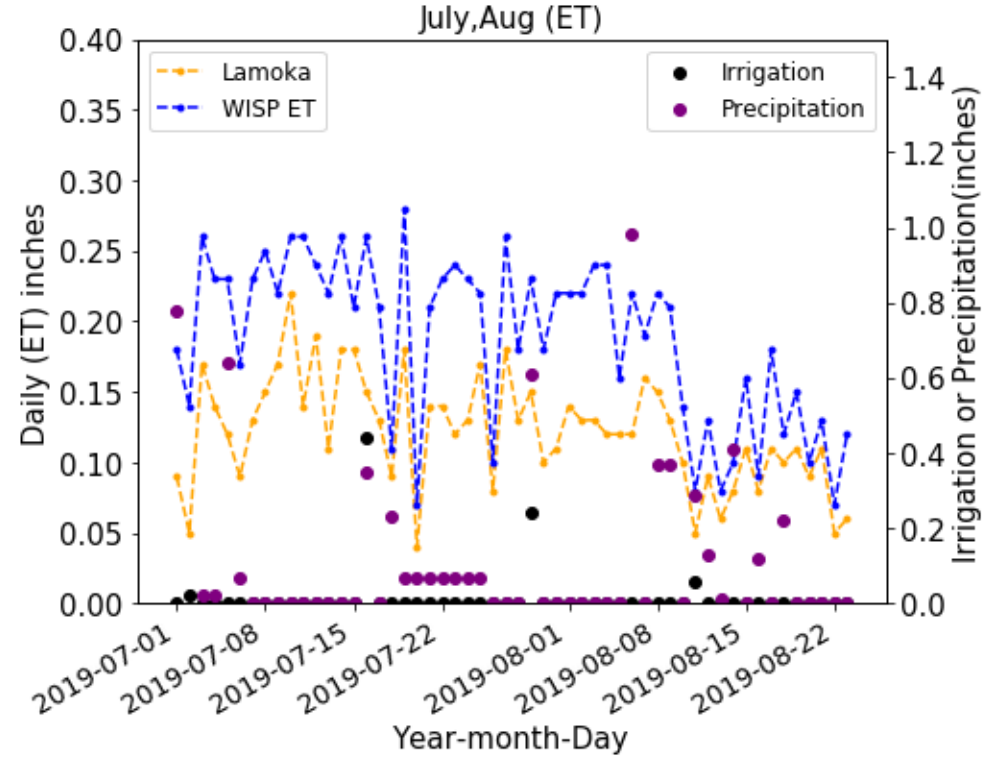
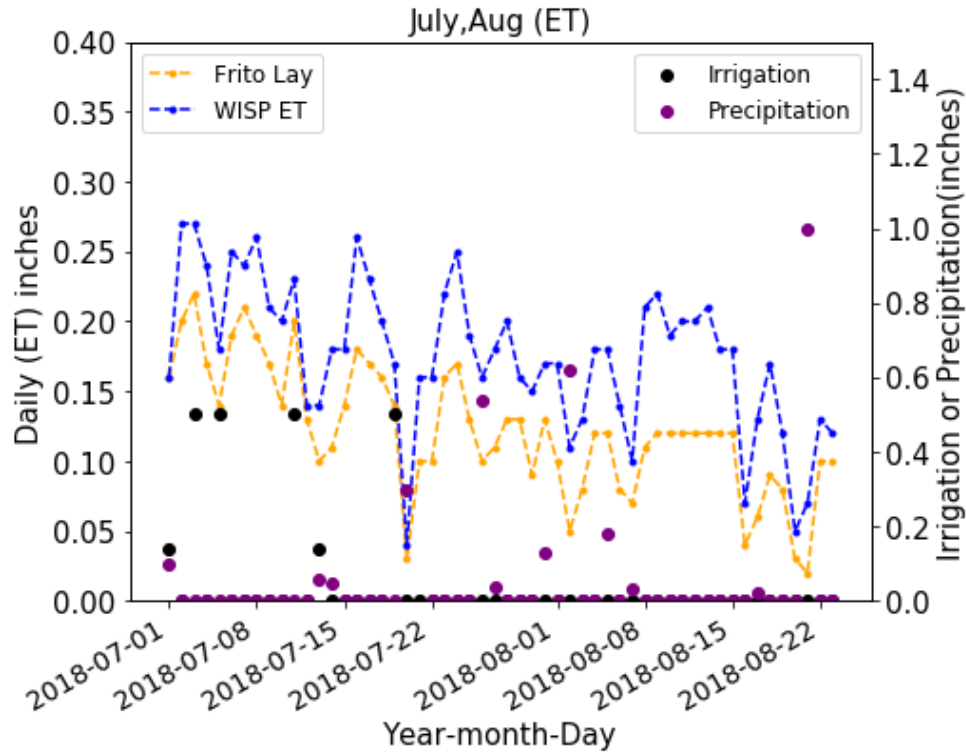
US-CS1  
Heartland Farm  
"FL"

Ankur Desai  
Ammara Talib  
Jonathan Thom  
UW-Madison  
+ partners



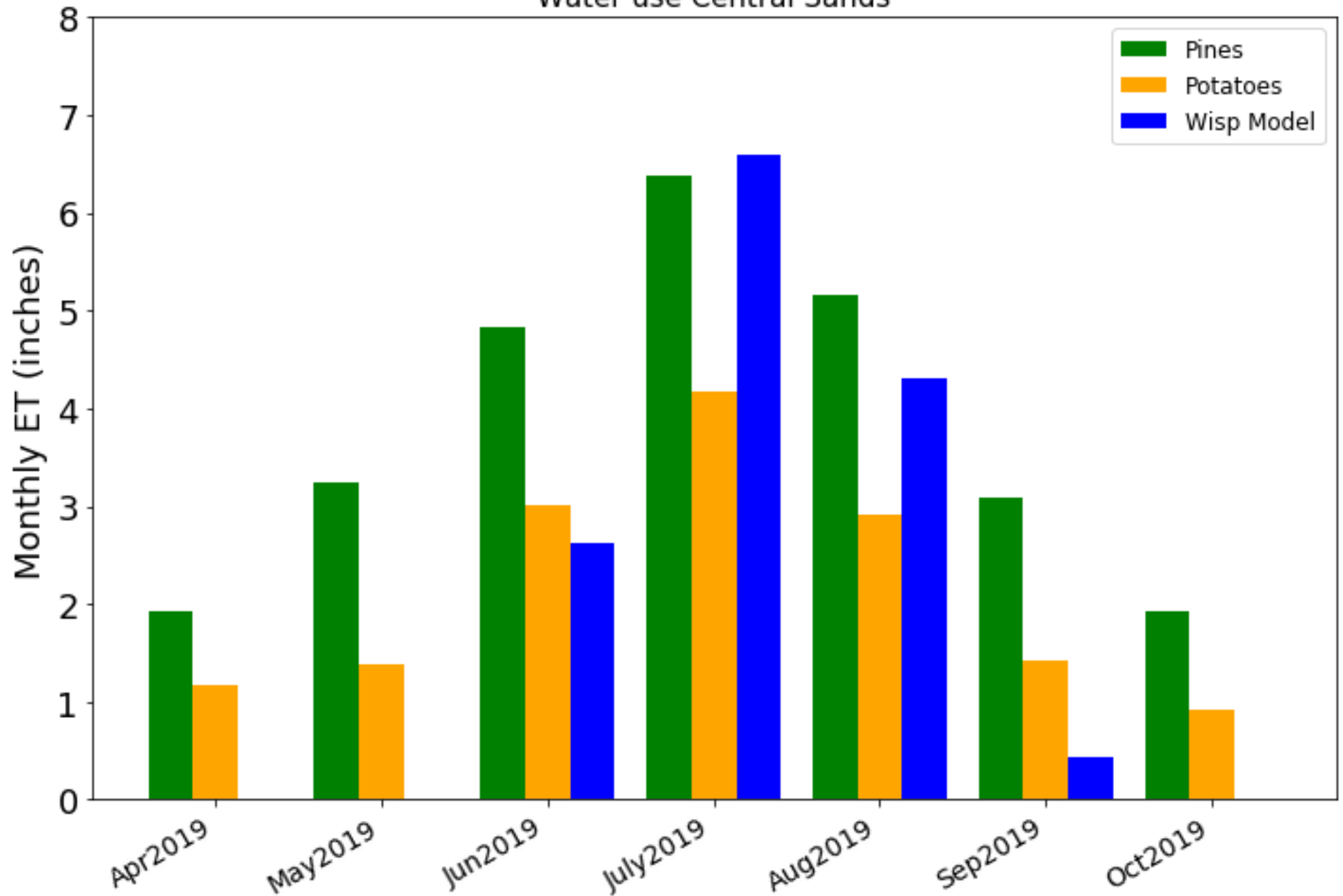
### Water use Central Sands

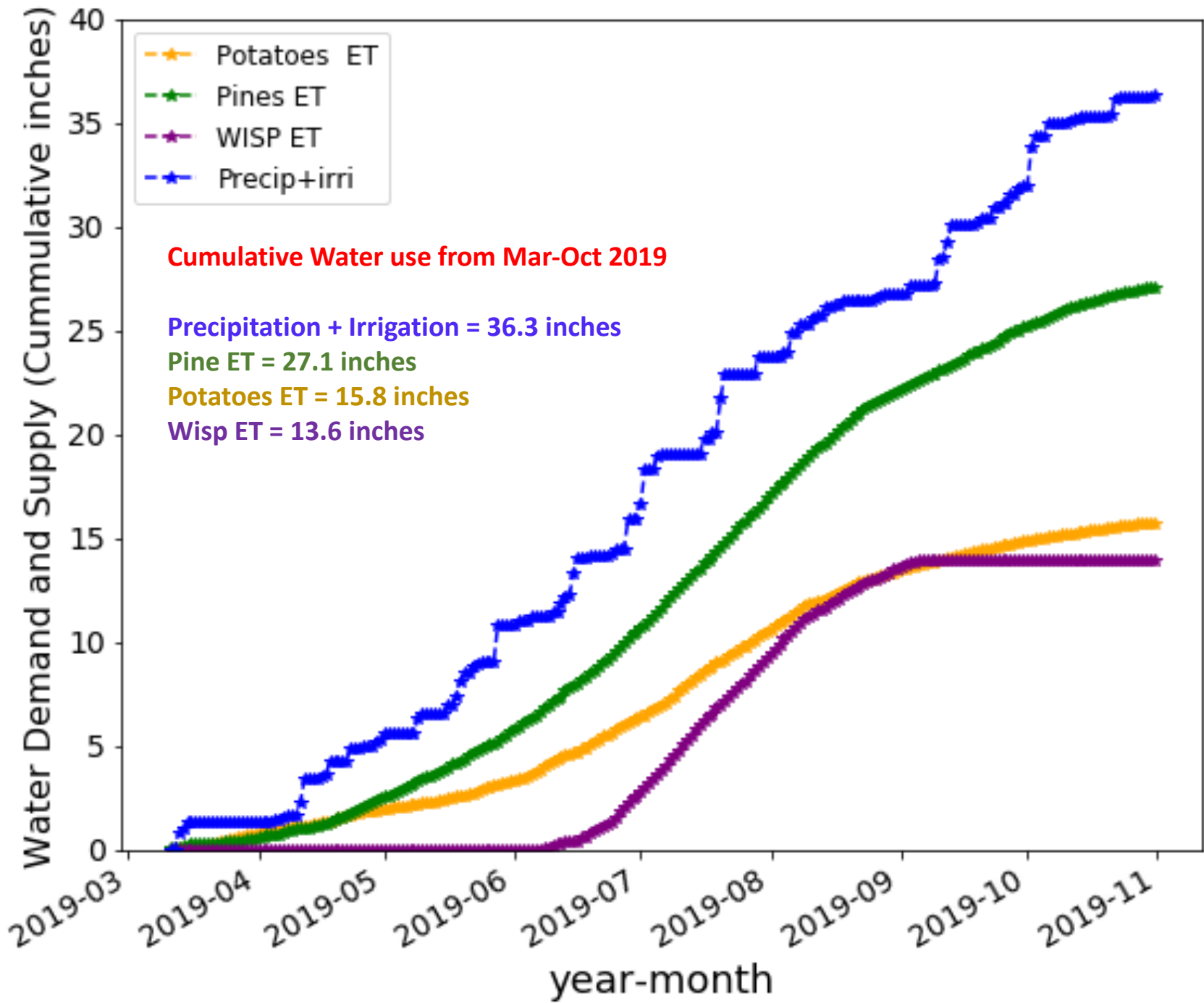


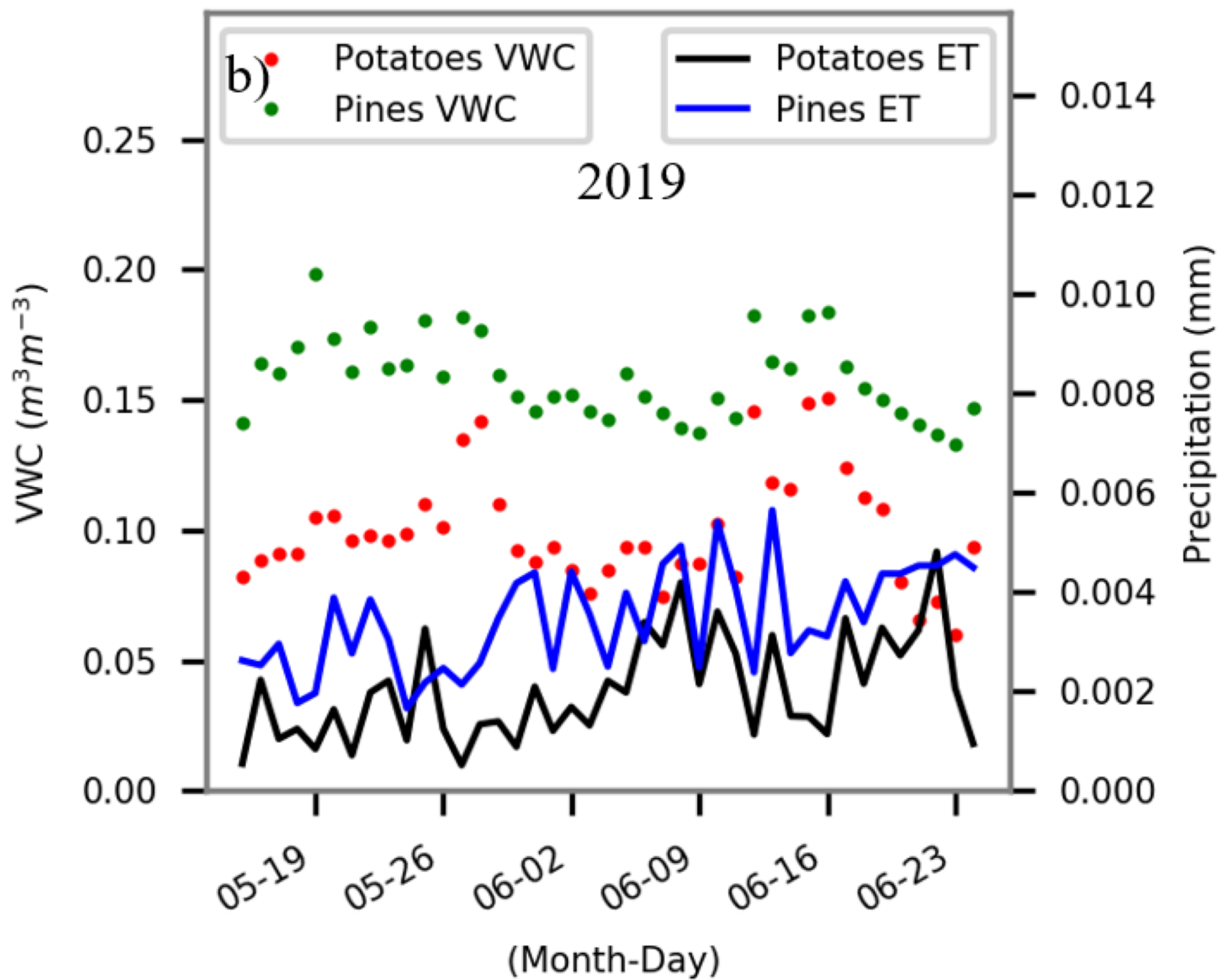


Potato	year	month	Irrigation	Precip	Tower ET	Wisp ET
FL	2018	Jul-Aug	2.3	11.1	7.0	10.2
Lamoka	2019	Jul-Aug	0.8	7.7	6.6	10.1

Water use Central Sands







### Next steps:

- Improve website <https://flux.aos.wisc.edu/potato>
- Forecasting crop ET manuscript to be submitted December 2019
- Flux tower observation pine vs potato ET to be written spring 2020
- Current funding includes one more growing season and two dormant seasons

### Questions for group:

- Other public interest pieces?
- Website suggestions?
- Move mobile “Lamoka” tower from US-CS3? If so, when and where?
- Continued observation/funding after June 30, 2021?