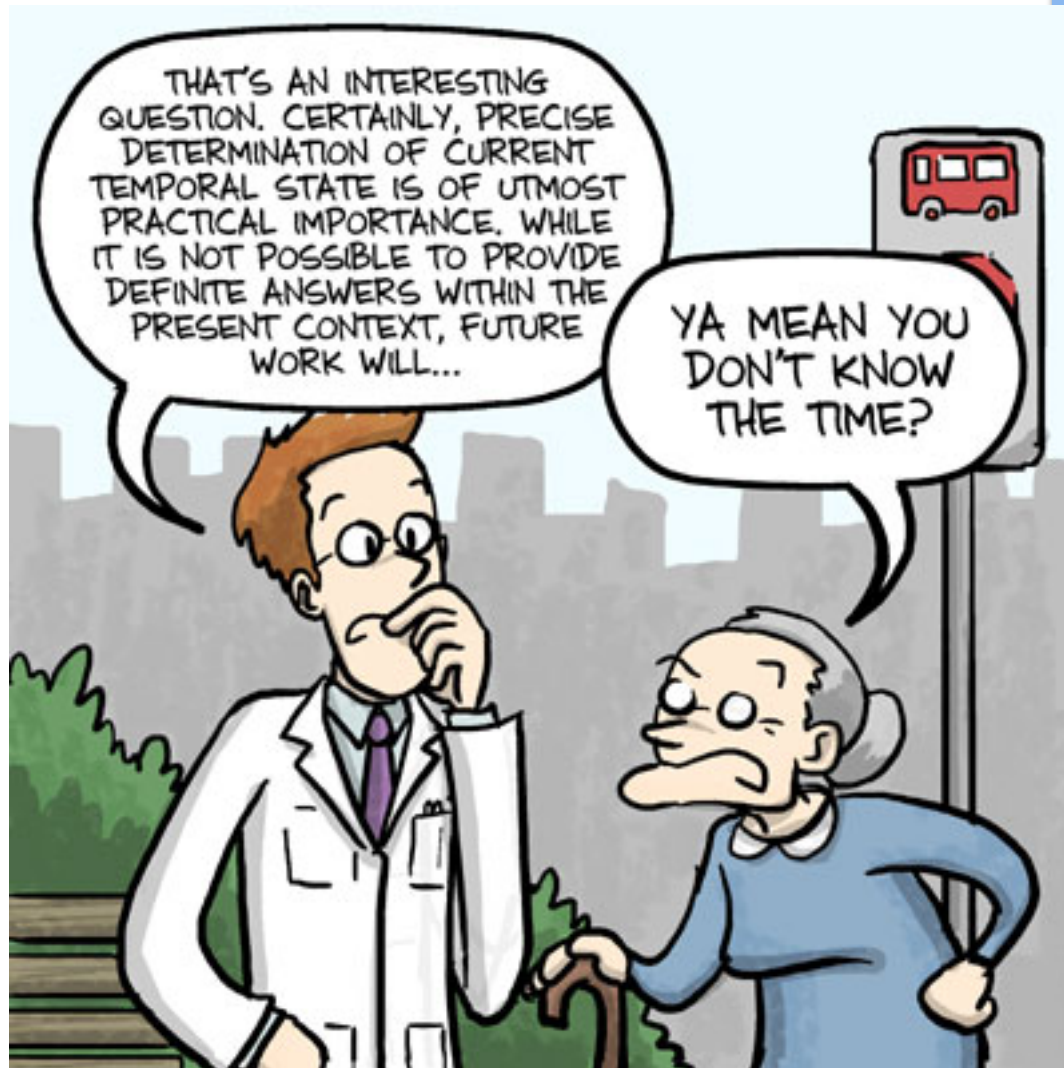




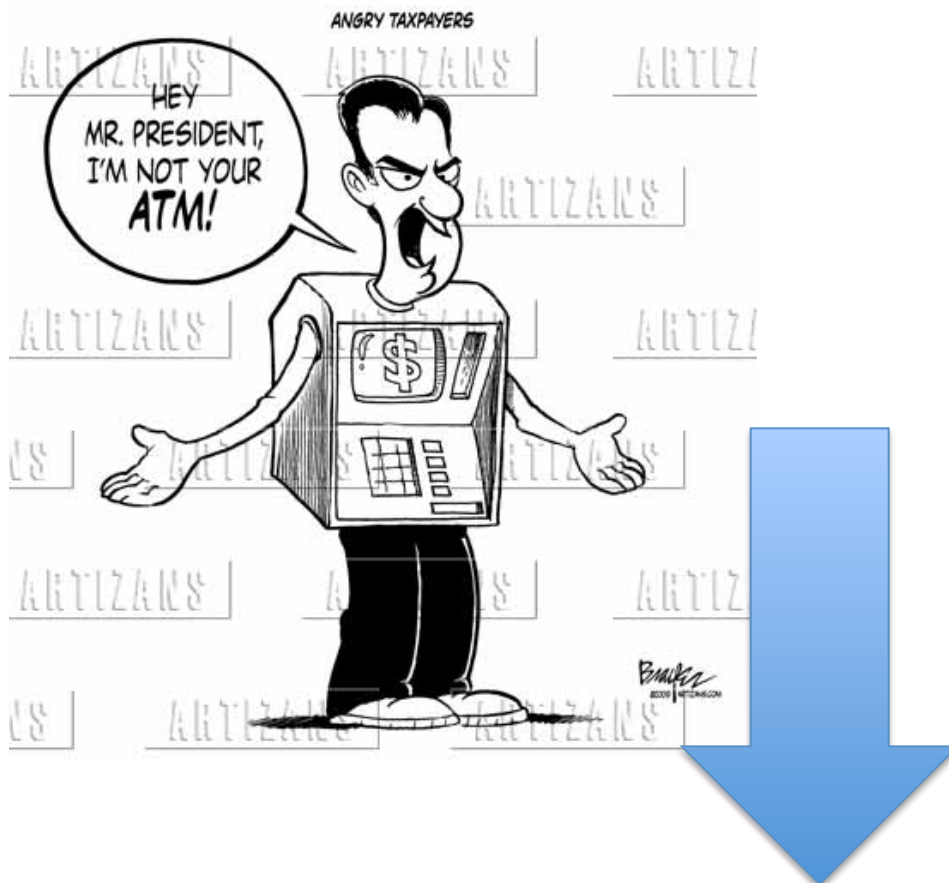
Ankur Desai, AOS Dept Seminar, 12 Sept 2012

SCHOLARS CREATE AND COMMUNICATE KNOWLEDGE



You have a moral responsibility as a scientist to engage the public about the natural world

They fund you and want to learn!



An added bonus: An easy way to build your teaching and communication skills!



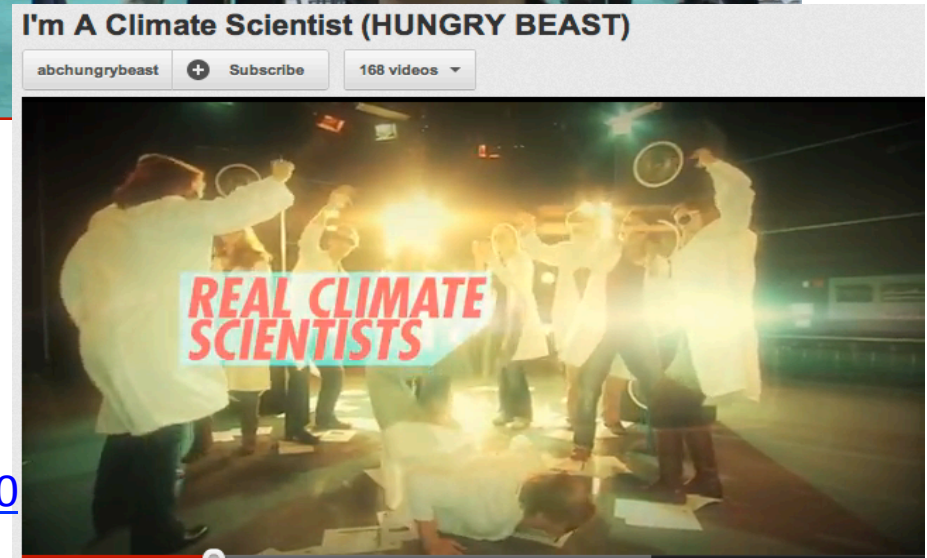
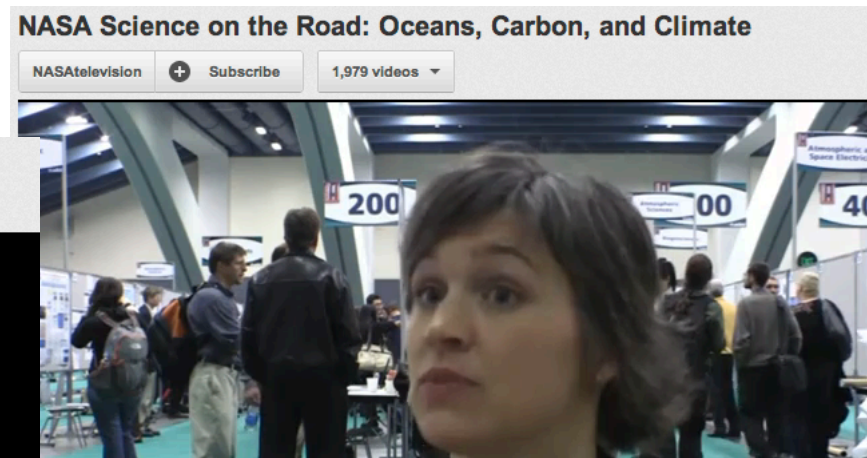
<http://www.youtube.com/watch?v=Fl4L4M8m4d0>

So, what can you can do?

And who doesn't love talking about the weather?



- What you can do:
 - Start a blog, participate in forums, present in videos and multimedia, build an app or web tool



<http://www.youtube.com/watch?v=LiYZxOICN10>

- What you can do:

- Visit schools and museums with lab demos/talks

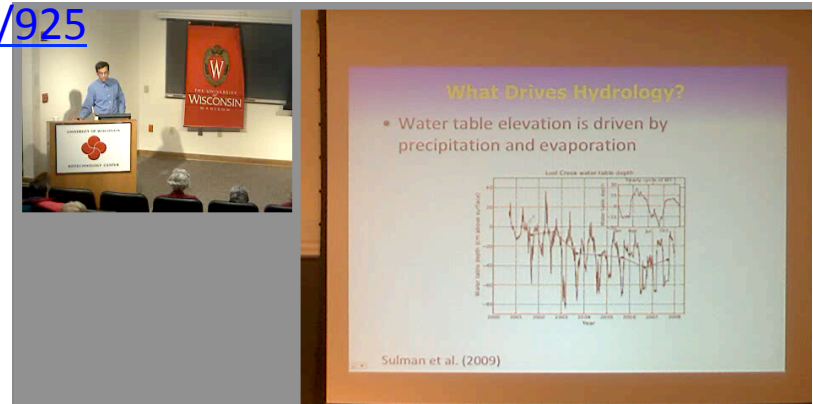
- See GSA Outreach committee

- <http://www.aos.wisc.edu/~gsa/outreach.html>

- Madison School District, Scouting, Aldo Leopold Nature Center, Madison Children's Museum, SSEC Outreach Building Tours, WAA Grandparent's University

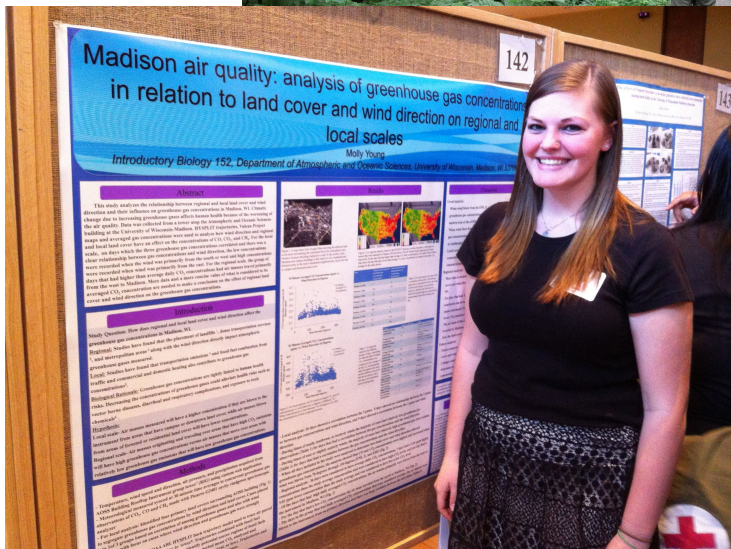
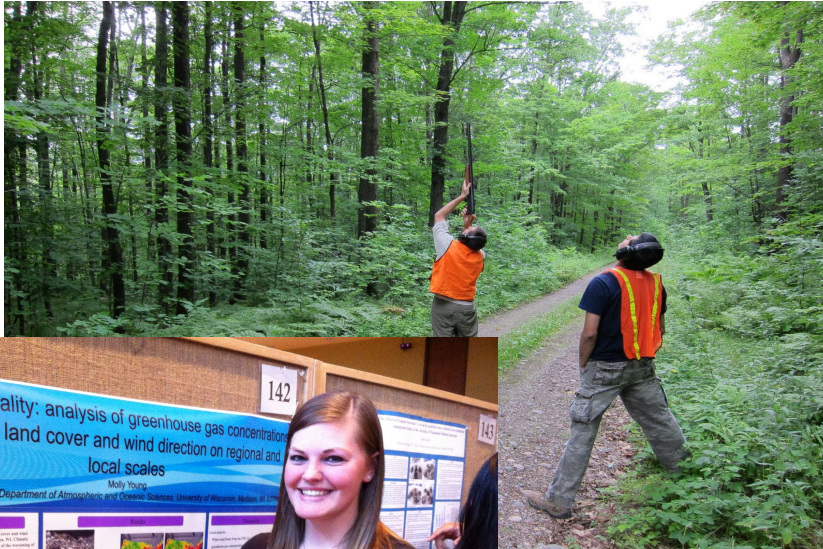


- What you can do:
 - Find local activities and volunteer to present:
 - Science Alliance <http://www.science.wisc.edu/>
 - Wednesday Nite @ The Lab:
<http://www.uwalumni.com/wednitelab>
 - Mad Science Pub: <http://madison.sciencepub.us/>
 - Why Files: <http://whyfiles.org/>
 - Community Partnerships and Outreach:
<http://www.med.wisc.edu/education/md/community-service/community-partnerships-and-outreach-staff-network/925>



- What you can do:
 - Mentor an undergraduate (REU, honors thesis, interns – BIO152) – ask your advisor

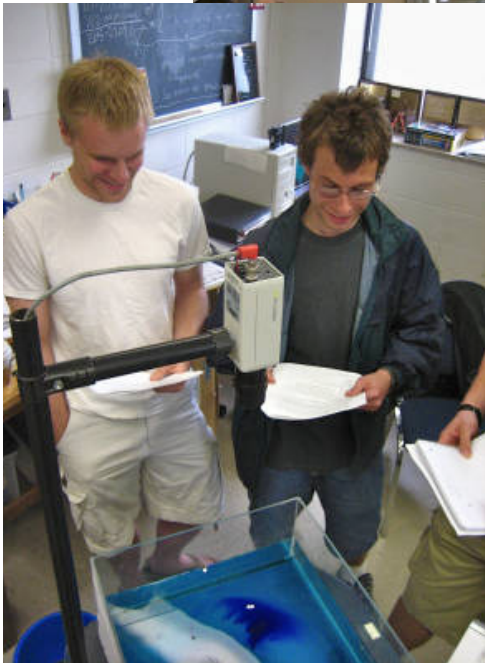
Undergraduate Symposium <http://www.learning.wisc.edu/ugsymposium/>
AOSS Poster Session: http://www.ssec.wisc.edu/aoss_posters/



- What you can do:
 - Get out into the field!



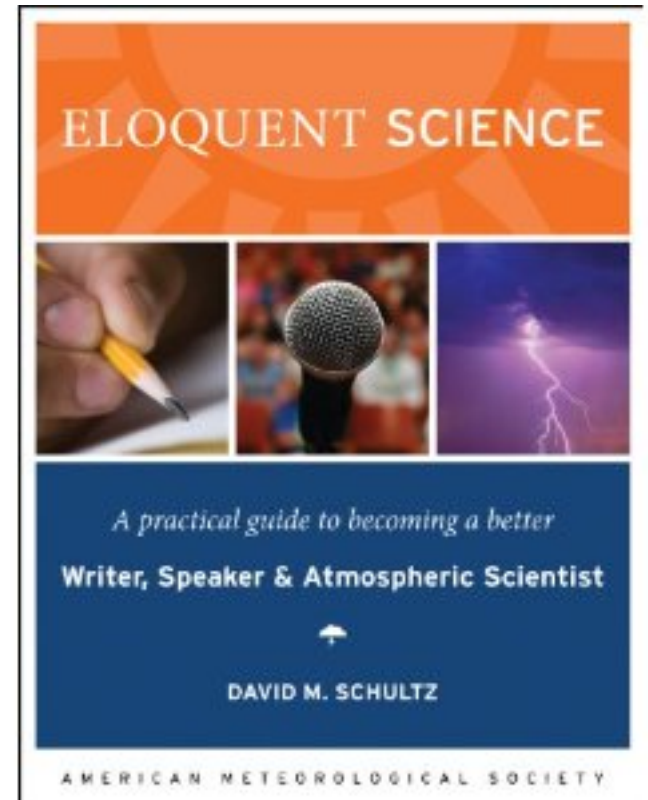
- What you can do:
 - We have instruments and tools in our department you can learn how to use and borrow for demos



- What you can do:
 - We have classes where you can learn lab or field instrumentation, e.g., AOS401 + AOS801



TO BECOME A BETTER COMMUNICATOR: Read about it, watch others, and then go do it!



+ campus resources galore: <http://science.wisc.edu>

- OUTREACH IS FUN!

