



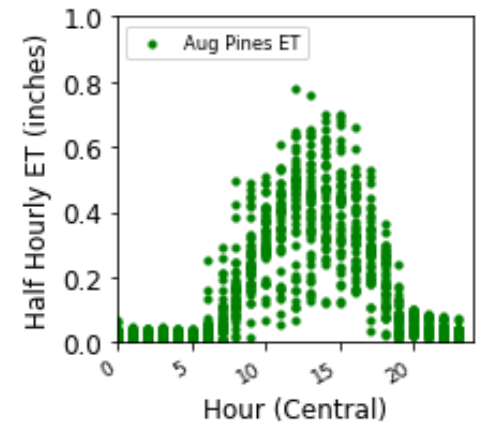
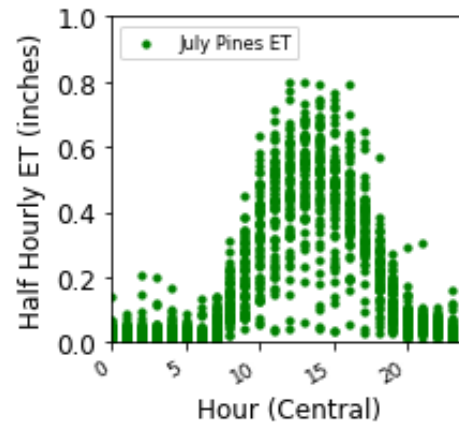
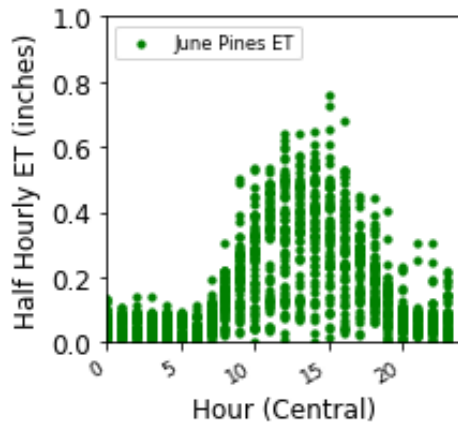
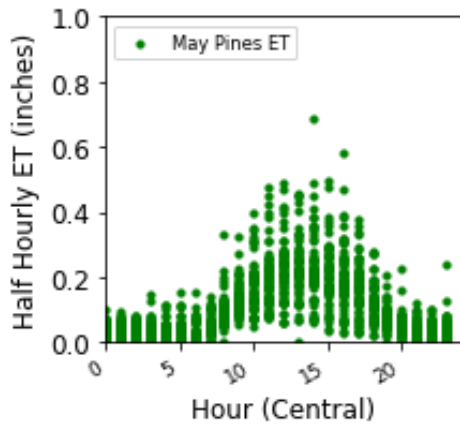
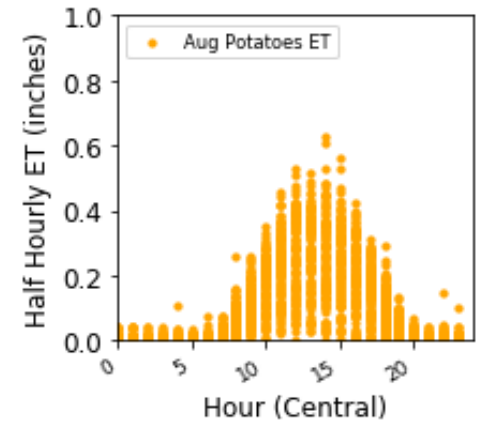
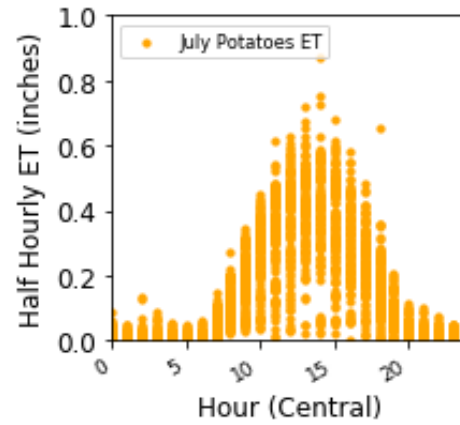
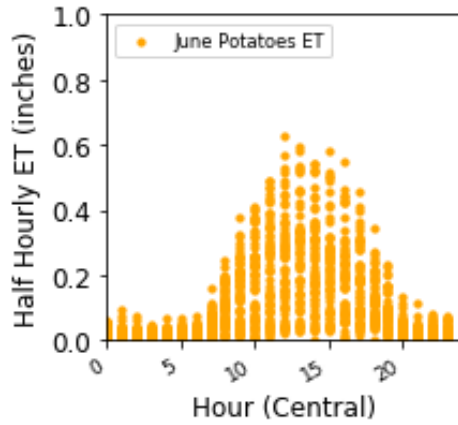
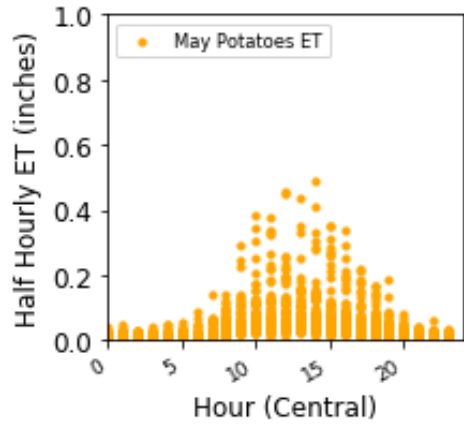
**Prof. Ankur Desai**  
**Ammara Talib**  
**University of Wisconsin-Madison**  
**WPVGA Meeting August 27<sup>th</sup> 2019**

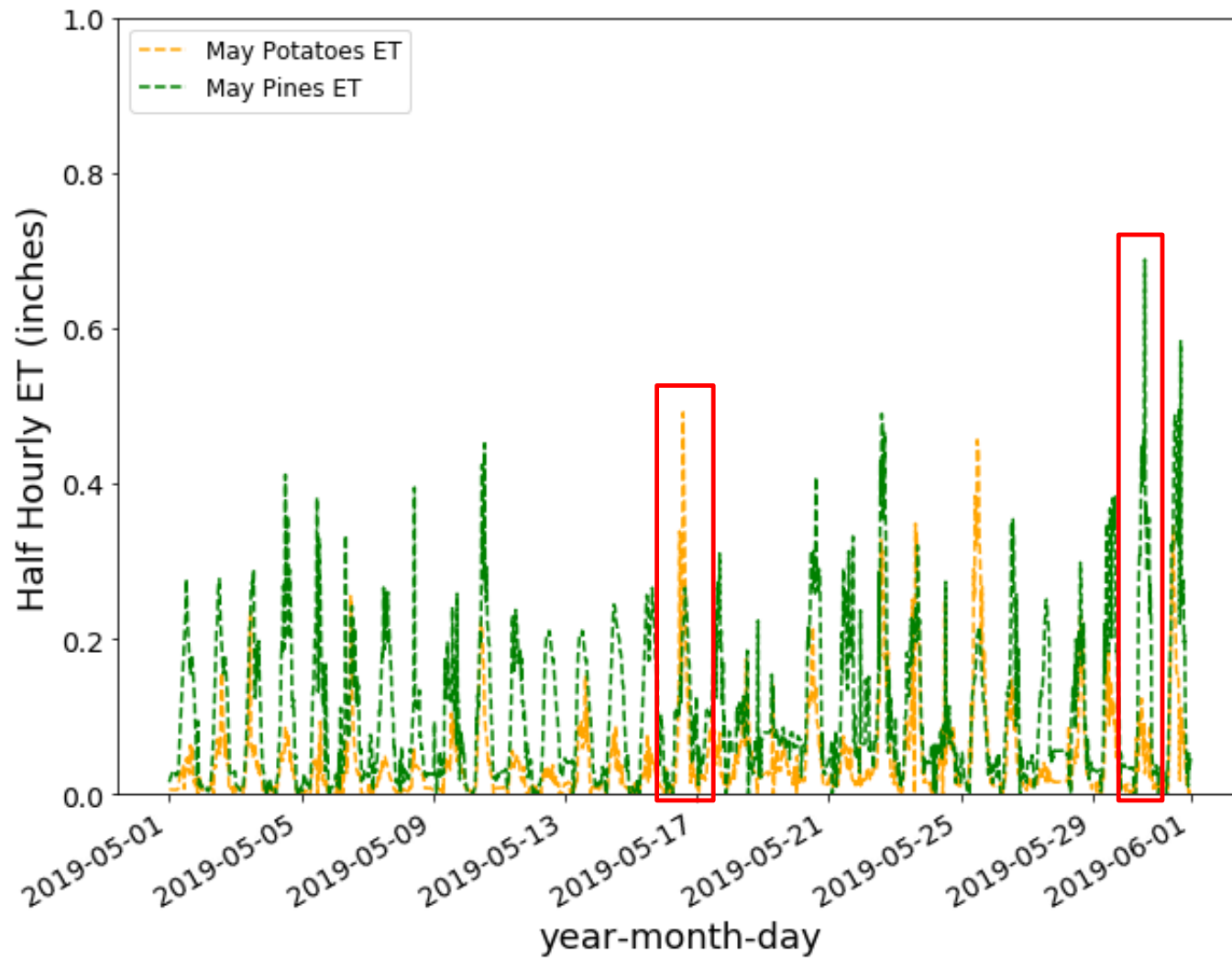


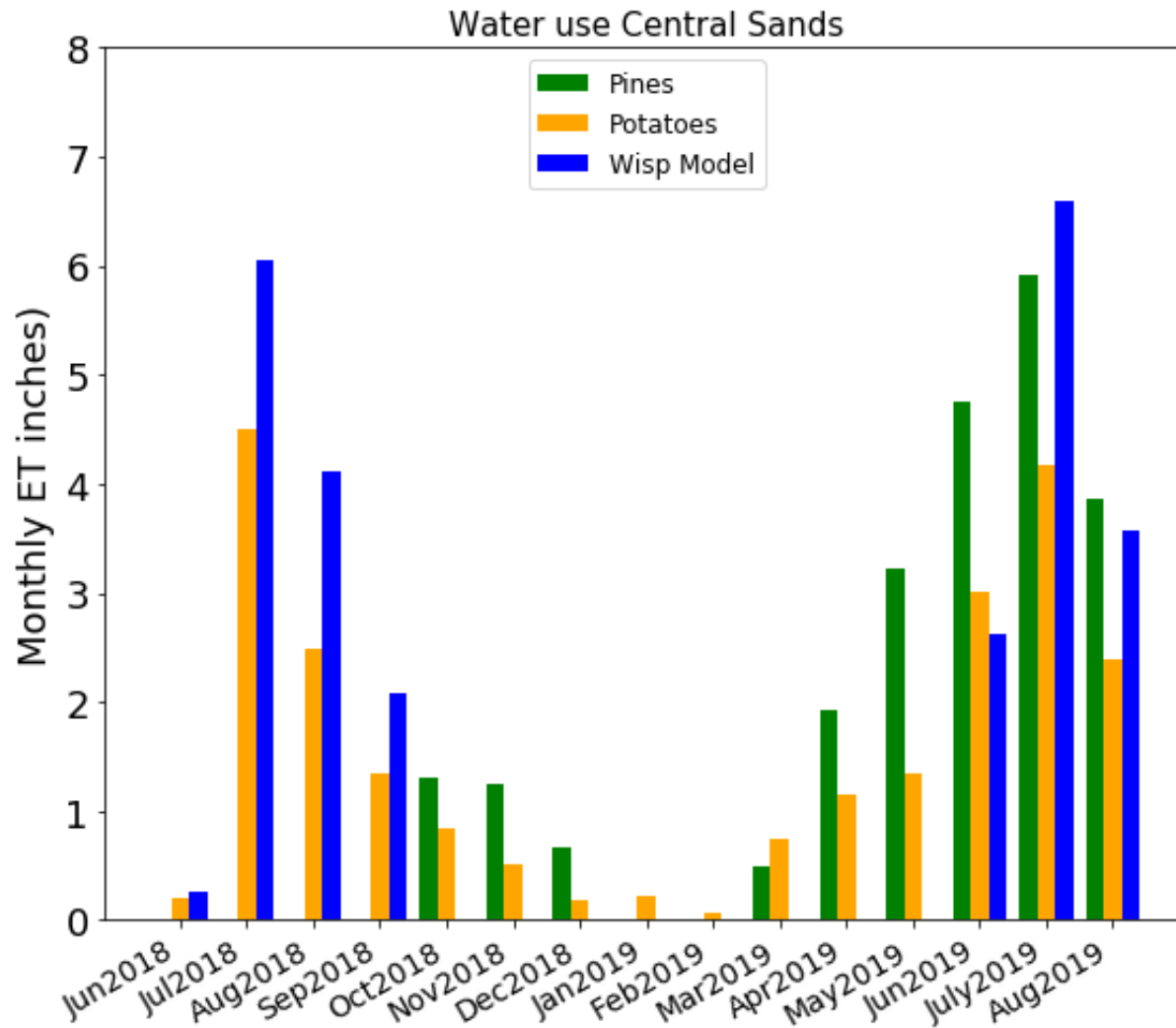
Data/Analysis Updates

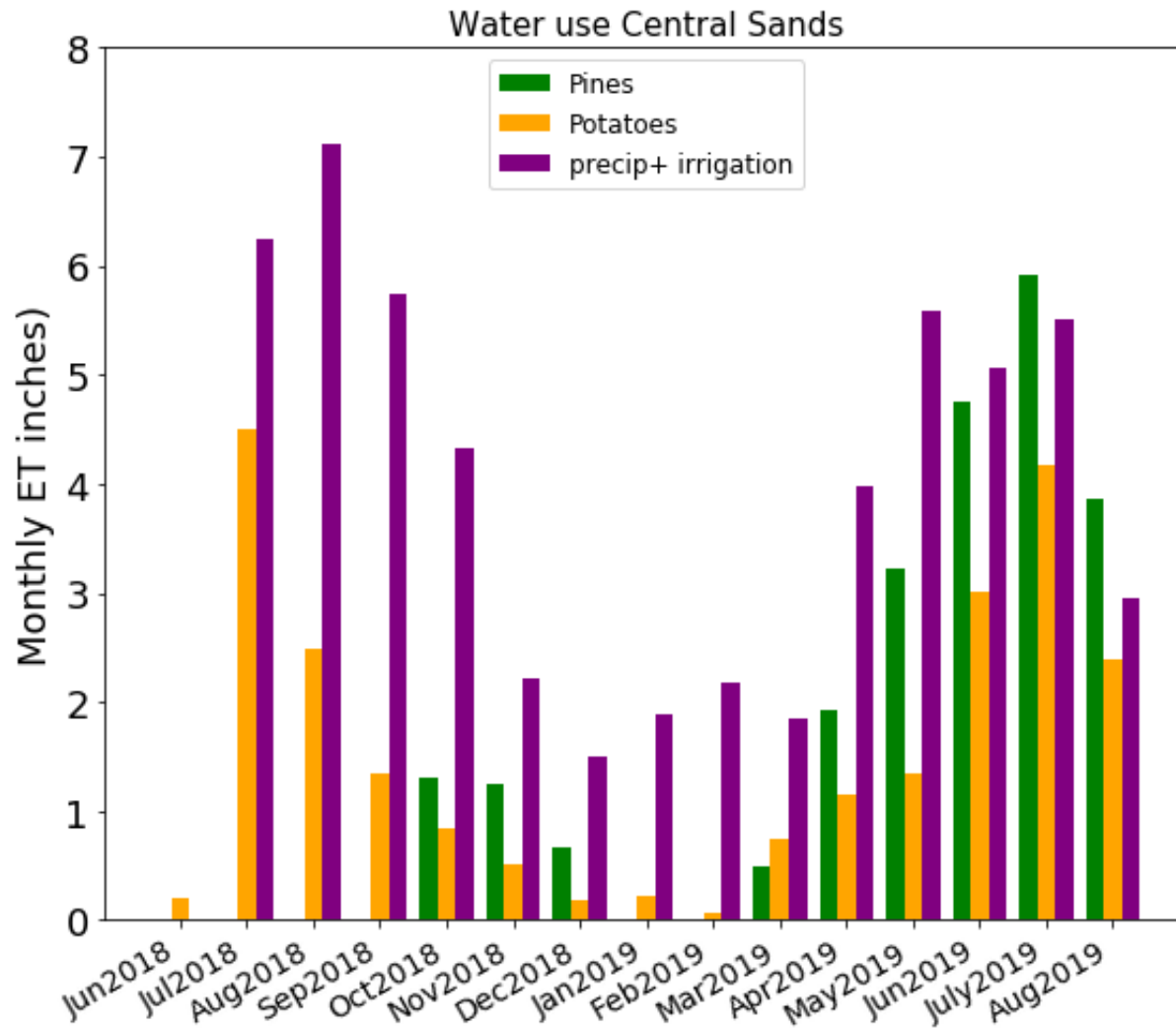
Tower Installed on June 29<sup>th</sup>  
2018









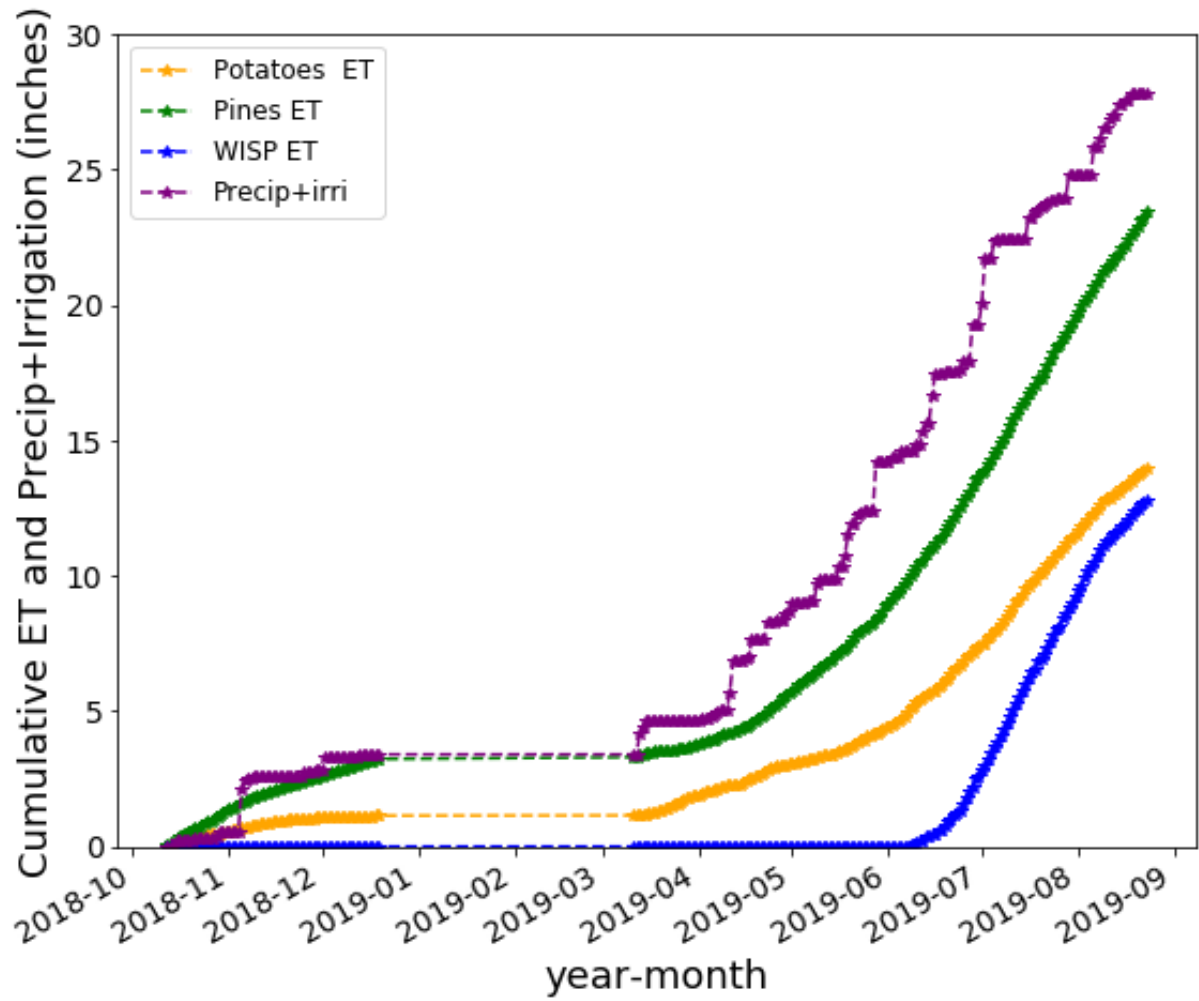


Pine tower started operating on Oct 12<sup>th</sup> 2018 and Potato Tower started operating on 30<sup>th</sup> June 2018.

Missing data for pine tower for month of Jan, Feb March 2019 (sensor broke/snow battery).

For fair Comparison next plot include only those days when data was present for both pine and potato site.





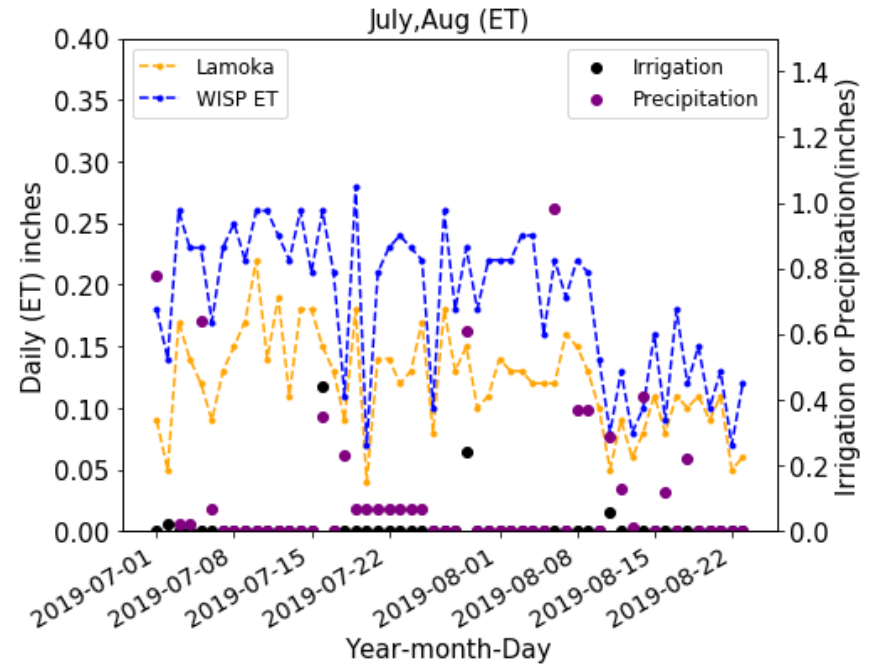
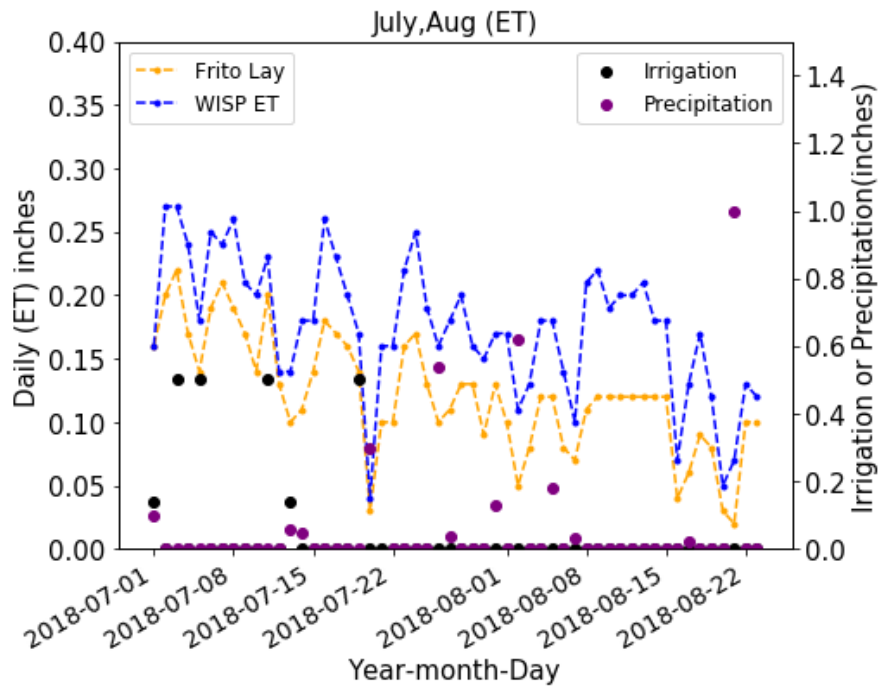
**Cumulative Water use from 10-12-2018 to 08-22-2019**

Precipitation + Irrigation=28 inches

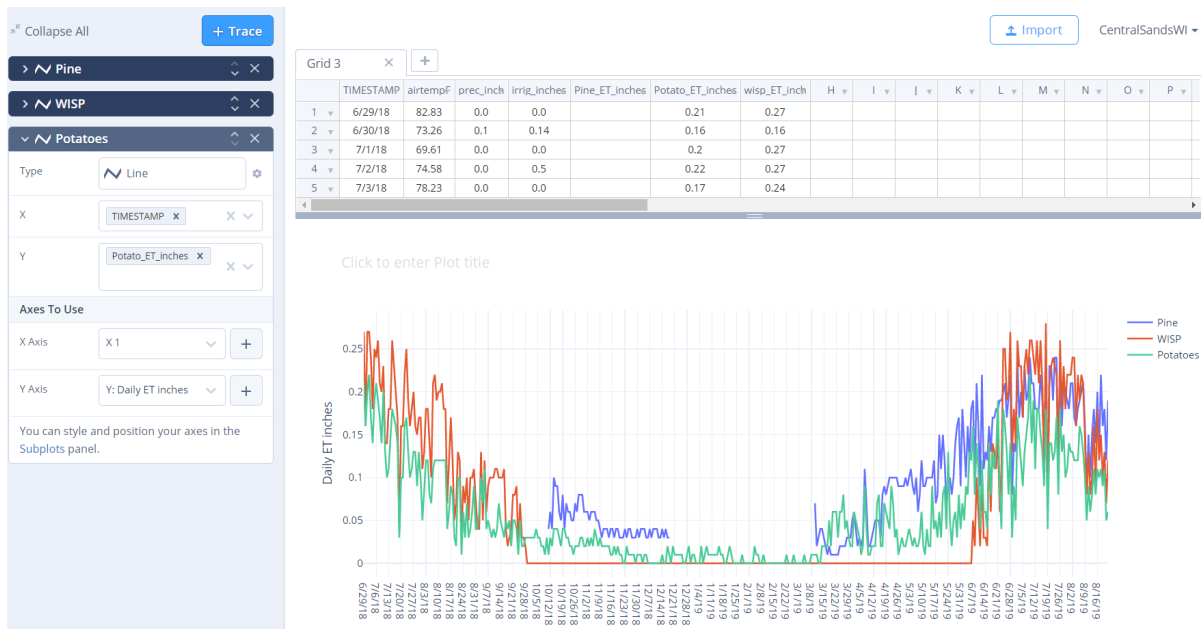
Pine ET=23 inches

Potatoes ET=14 inches

Wisp ET= 13 inches



Potato	year	month	Irrigation	Precip	Tower ET	Wisp ET
Frito Lay	2018	July, Aug	2.3	11.1	7.0	10.2
Lamoka	2019	July, Aug	0.8	7.7	6.6	10.1



[centralsandswi@gmail.com](mailto:centralsandswi@gmail.com)  
password wispines

<https://plot.ly/create/?fid=CentralSandsWI:4&fid=CentralSandsWI:3#/>

## Questions/Suggestions about website

- What do you want to be able to see on this website?
- How often should it be updated?
- Are text numbers or graphs more useful?
- Is it useful to get recent half-hourly data too, or is daily sufficient?
- Are the units and variable names understandable

## Acknowledgements

Jonathan Thom, UW-Madison Space Sciences and Engineering Center

Tamas Houlihan, WPVGA Water Task Force  
Bob Smail, Wisconsin DNR

Jeremie Pavelski, Heartland Farms  
Joe Raboin, Tri-County School Forest

Mallika Nocco, University of Minnesota  
Jingyi Huang, UW-Madison Soil Science  
CEE Faculty Graduate students, Desai lab