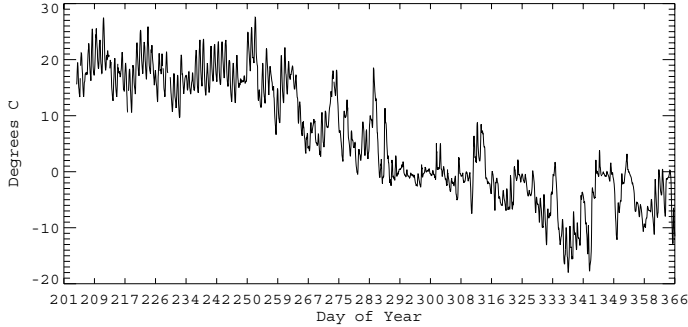
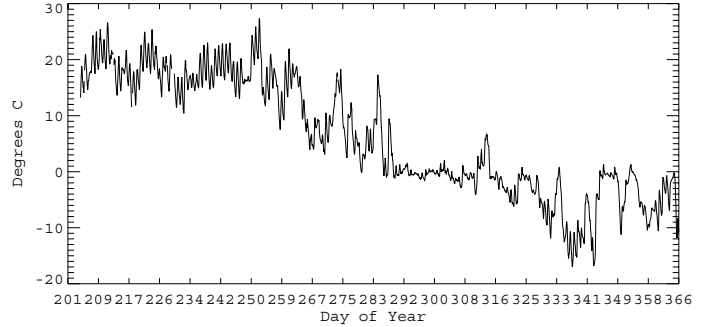


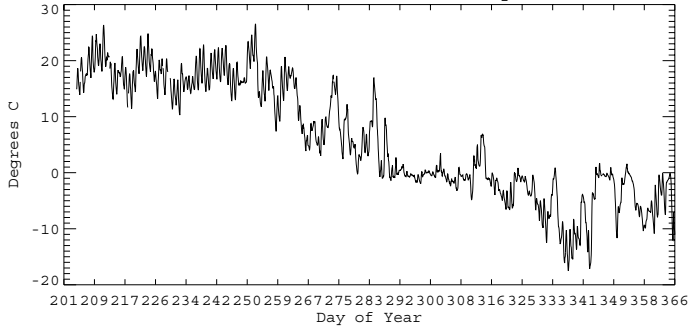
H. Lake 2002, Box: 2 Loc: 27 Tree: 43 Sp: HL DBH: 11.6000



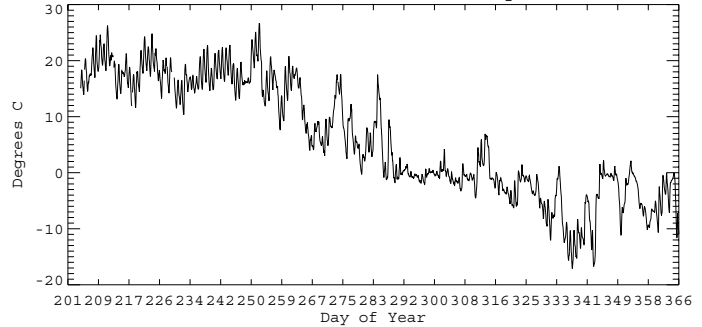
H. Lake 2002, Box: 1 Loc: 3 Tree: 4 Sp: HL DBH: 15.8000



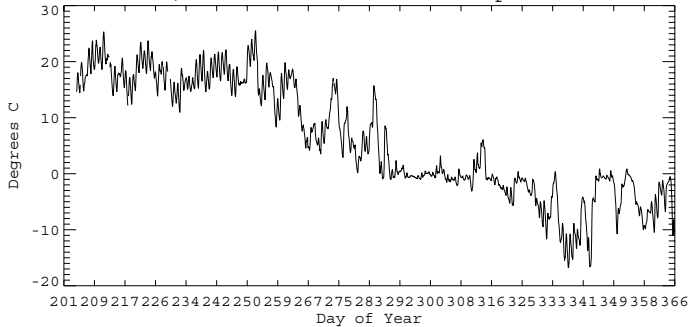
H. Lake 2002, Box: 2 Loc: 25 Tree: 223 Sp: HL DBH: 16.2000



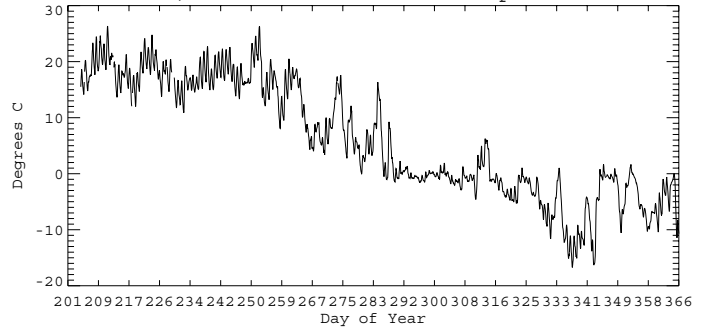
H. Lake 2002, Box: 2 Loc: 26 Tree: 221 Sp: HL DBH: 18.5000



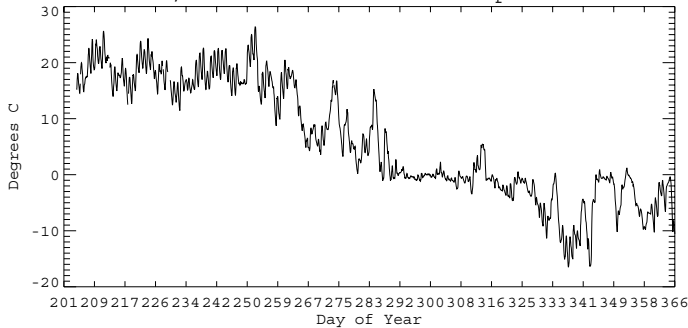
H. Lake 2002, Box: 2 Loc: 11 Tree: 36 Sp: HL DBH: 19.2000



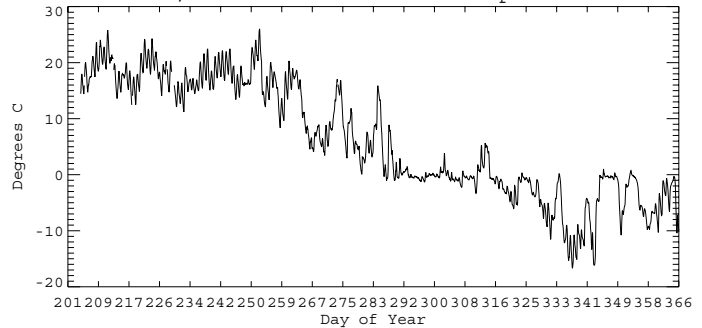
H. Lake 2002, Box: 2 Loc: 23 Tree: 42 Sp: HL DBH: 21.1000



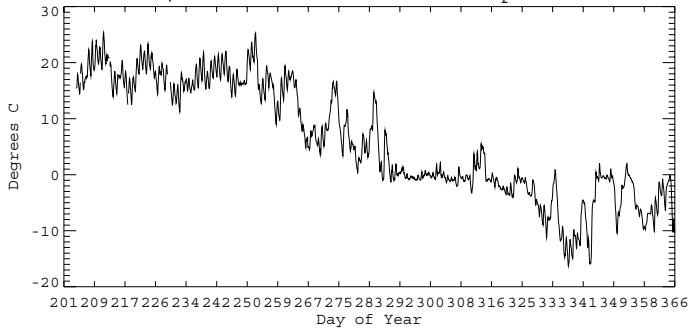
H. Lake 2002, Box: 2 Loc: 8 Tree: 219 Sp: HL DBH: 22.4000



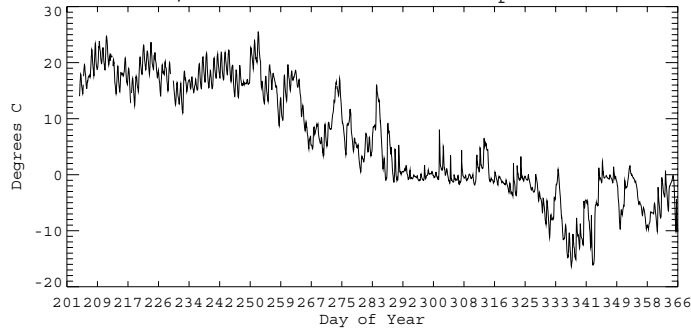
H. Lake 2002, Box: 2 Loc: 2 Tree: 326 Sp: HL DBH: 23.3000



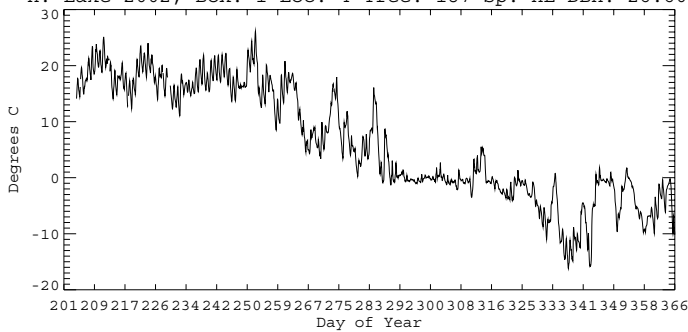
H. Lake 2002, Box: 2 Loc: 32 Tree: 277 Sp: HL DBH: 24.7000



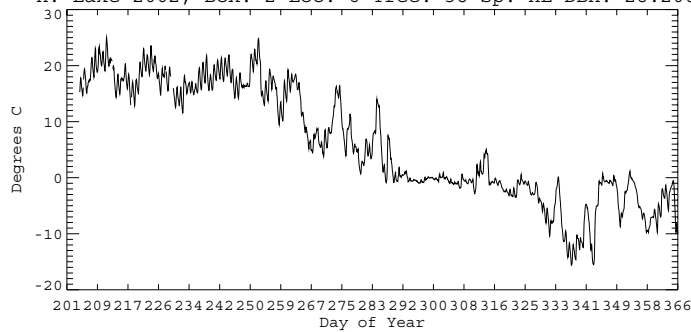
H. Lake 2002, Box: 1 Loc: 11 Tree: 12 Sp: HL DBH: 26.6000



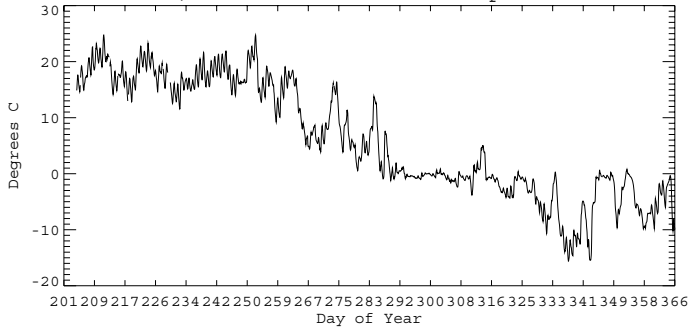
H. Lake 2002, Box: 1 Loc: 4 Tree: 187 Sp: HL DBH: 26.6000



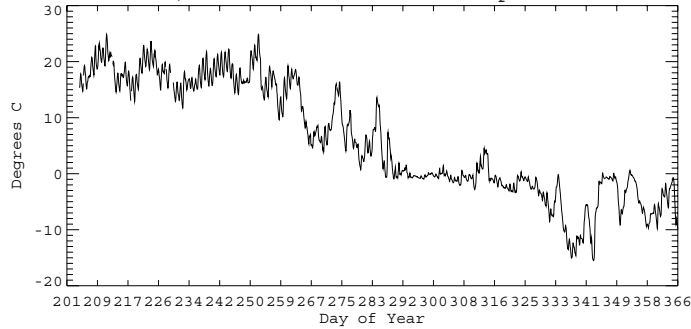
H. Lake 2002, Box: 2 Loc: 6 Tree: 38 Sp: HL DBH: 28.2000



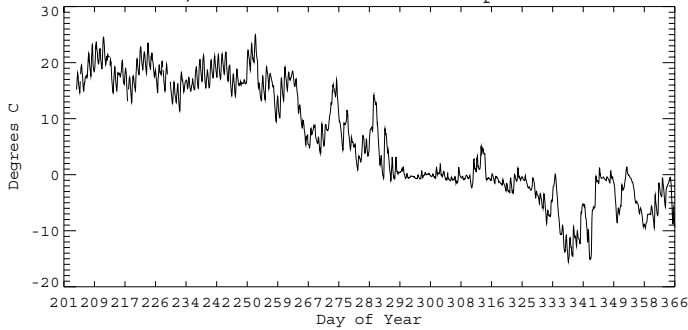
H. Lake 2002, Box: 2 Loc: 5 Tree: 39 Sp: HL DBH: 32.1000



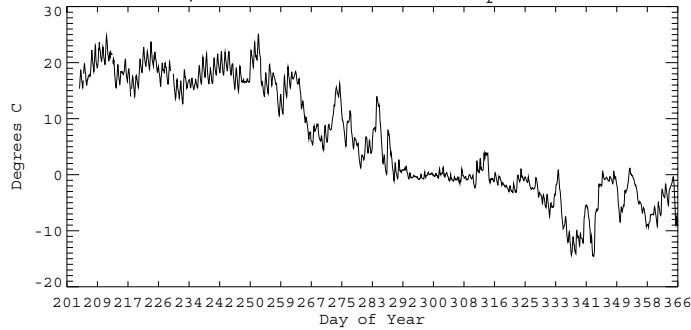
H. Lake 2002, Box: 2 Loc: 3 Tree: 334 Sp: HL DBH: 36.4000



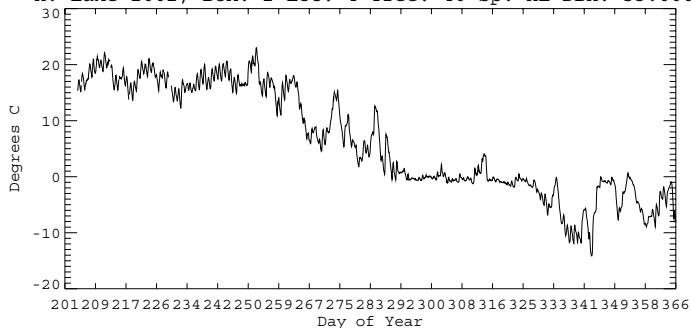
H. Lake 2002, Box: 1 Loc: 5 Tree: 5 Sp: HL DBH: 38.3000



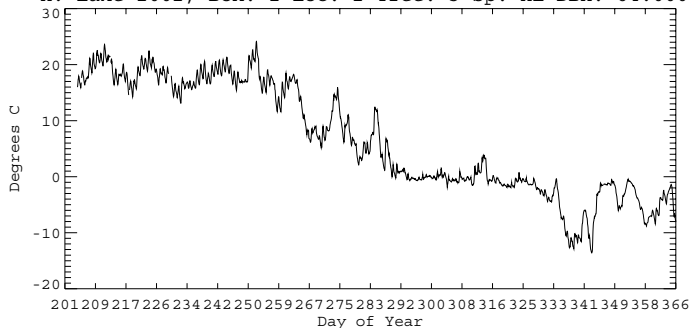
H. Lake 2002, Box: 1 Loc: 1 Tree: 2 Sp: HL DBH: 43.6000



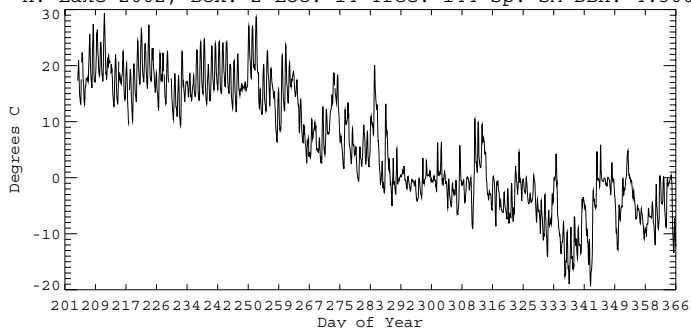
H. Lake 2002, Box: 2 Loc: 4 Tree: 40 Sp: HL DBH: 53.0000



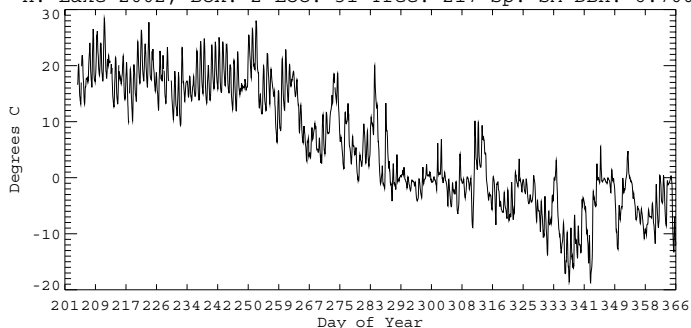
H. Lake 2002, Box: 1 Loc: 2 Tree: 3 Sp: HL DBH: 64.0000



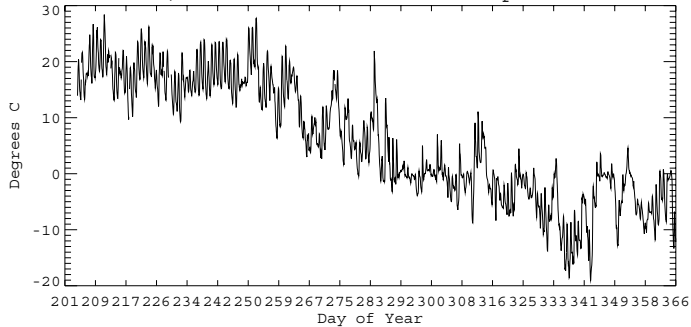
H. Lake 2002, Box: 2 Loc: 14 Tree: 144 Sp: SM DBH: 4.30000



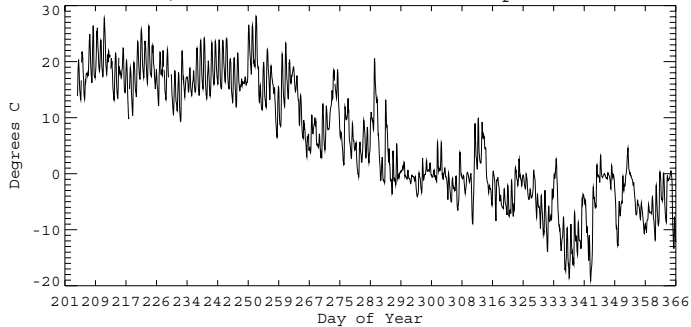
H. Lake 2002, Box: 2 Loc: 31 Tree: 217 Sp: SM DBH: 6.70000



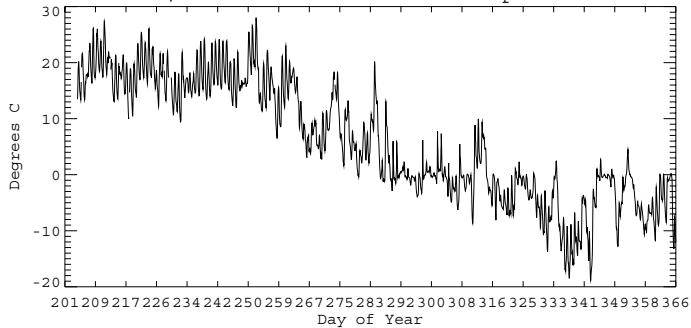
H. Lake 2002, Box: 1 Loc: 14 Tree: 394 Sp: SM DBH: 7.00000



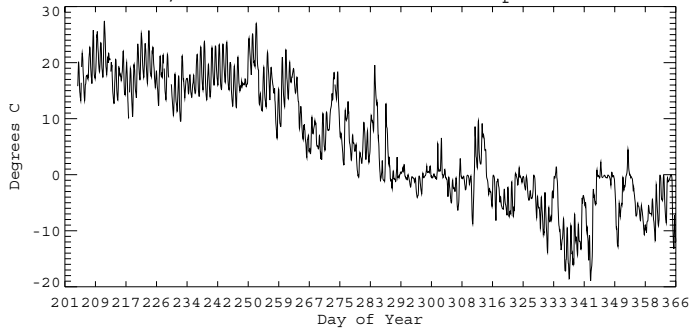
H. Lake 2002, Box: 1 Loc: 15 Tree: 392 Sp: SM DBH: 7.30000



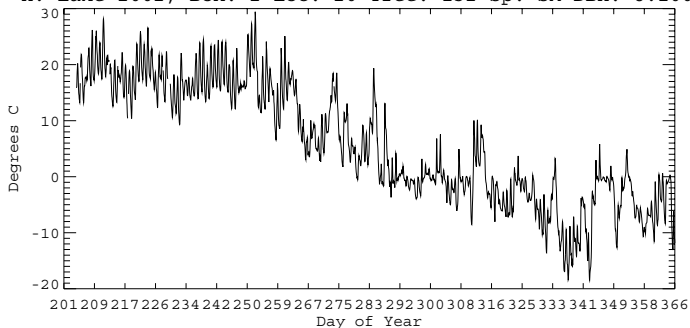
H. Lake 2002, Box: 1 Loc: 10 Tree: 195 Sp: SM DBH: 7.50000



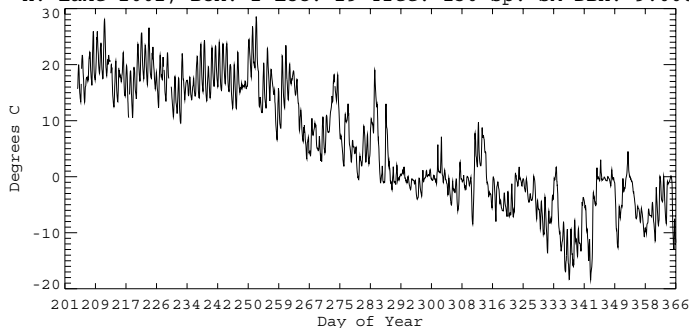
H. Lake 2002, Box: 2 Loc: 15 Tree: 143 Sp: SM DBH: 7.80000



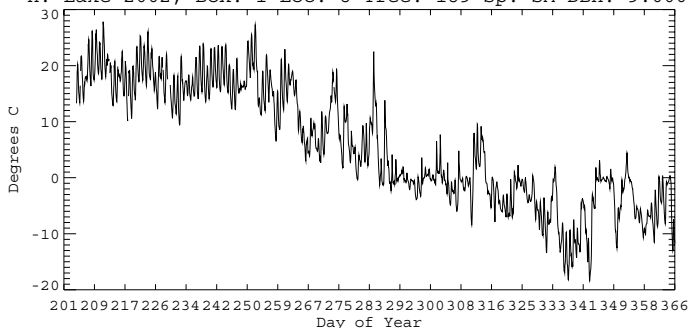
H. Lake 2002, Box: 2 Loc: 20 Tree: 132 Sp: SM DBH: 8.10000



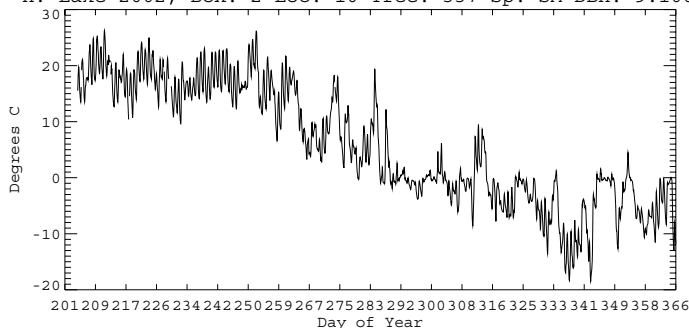
H. Lake 2002, Box: 2 Loc: 29 Tree: 130 Sp: SM DBH: 9.00000



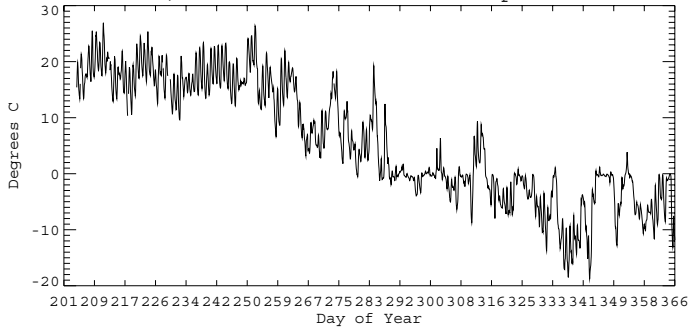
H. Lake 2002, Box: 1 Loc: 8 Tree: 189 Sp: SM DBH: 9.00000



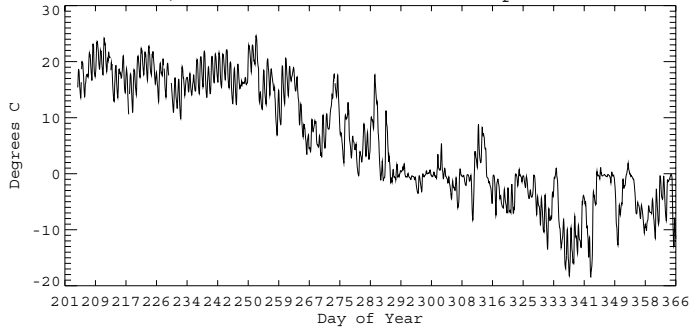
H. Lake 2002, Box: 2 Loc: 10 Tree: 337 Sp: SM DBH: 9.10000



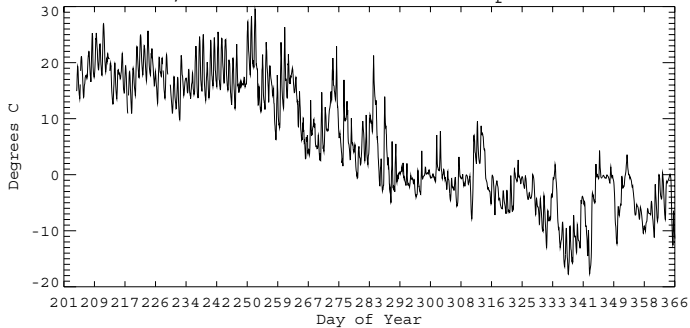
H. Lake 2002, Box: 2 Loc: 16 Tree: 142 Sp: SM DBH: 9.40000



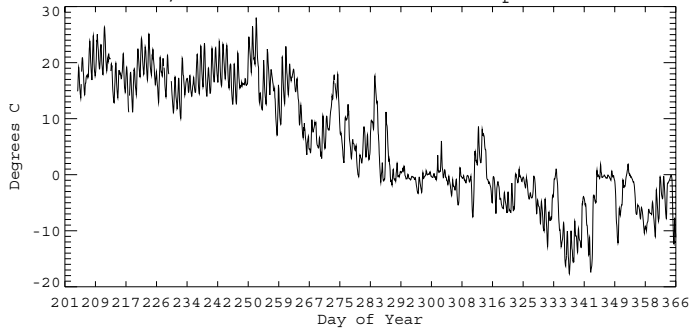
H. Lake 2002, Box: 2 Loc: 13 Tree: 147 Sp: SM DBH: 11.0000



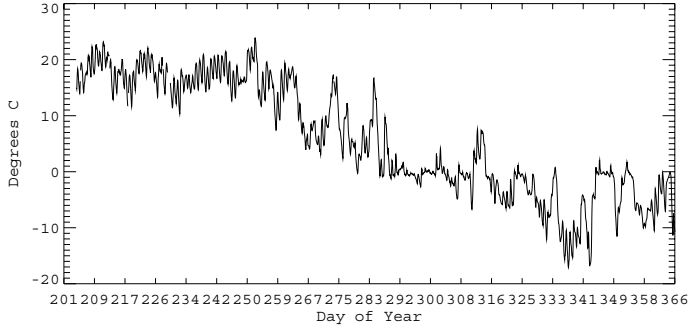
H. Lake 2002, Box: 2 Loc: 21 Tree: 32 Sp: SM DBH: 12.6000



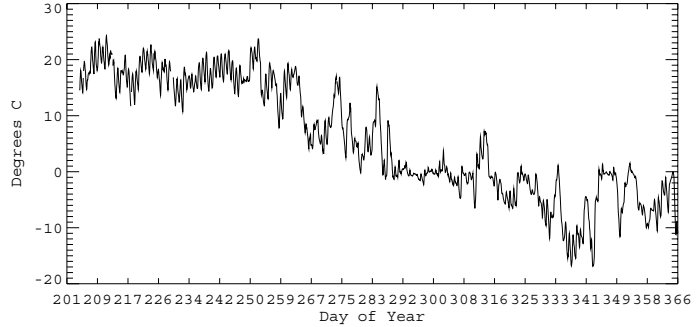
H. Lake 2002, Box: 2 Loc: 19 Tree: 133 Sp: SM DBH: 14.0000



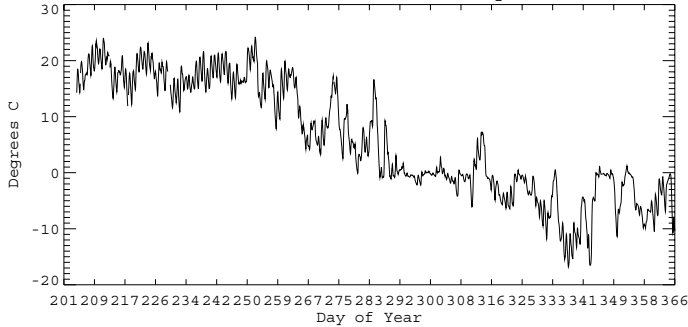
H. Lake 2002, Box: 2 Loc: 28 Tree: 224 Sp: SM DBH: 16.2000



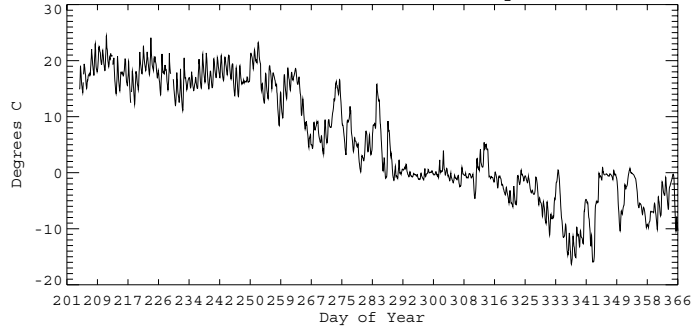
H. Lake 2002, Box: 2 Loc: 30 Tree: 212 Sp: SM DBH: 18.2000



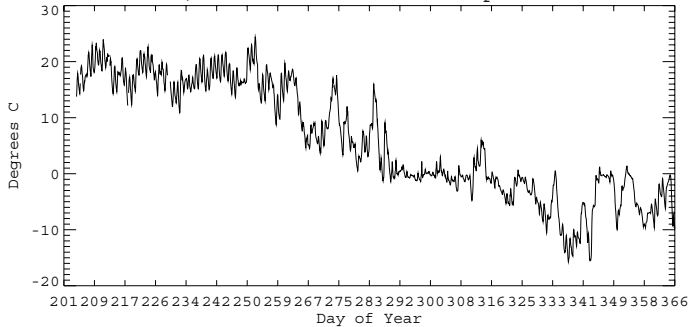
H. Lake 2002, Box: 2 Loc: 1 Tree: 327 Sp: SM DBH: 18.6000



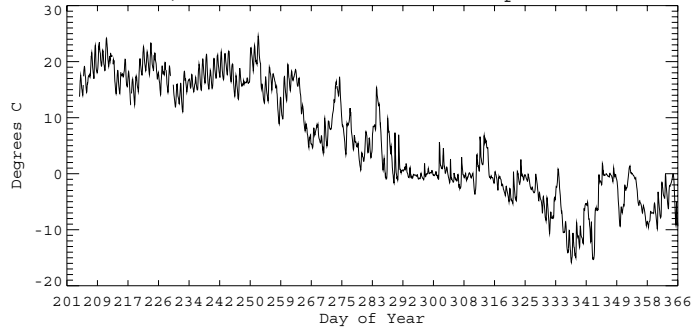
H. Lake 2002, Box: 2 Loc: 17 Tree: 141 Sp: SM DBH: 28.2000



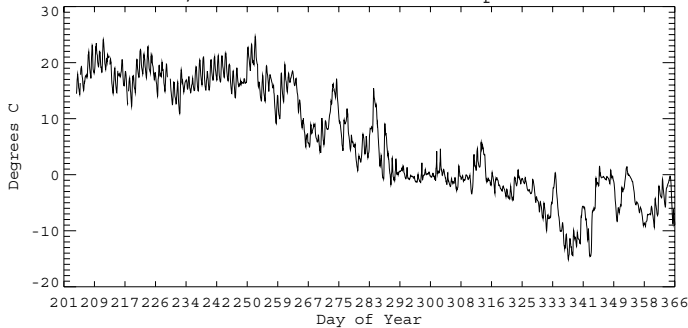
H. Lake 2002, Box: 1 Loc: 7 Tree: 7 Sp: SM DBH: 29.3000



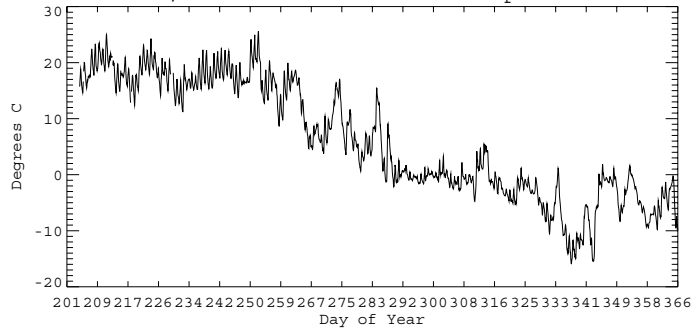
H. Lake 2002, Box: 1 Loc: 12 Tree: 431 Sp: SM DBH: 39.0000



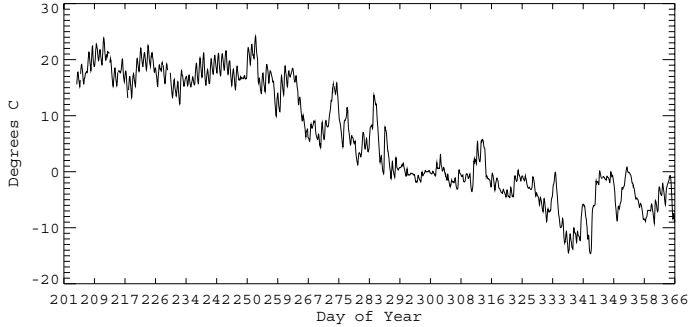
H. Lake 2002, Box: 1 Loc: 6 Tree: 6 Sp: SM DBH: 41.4000



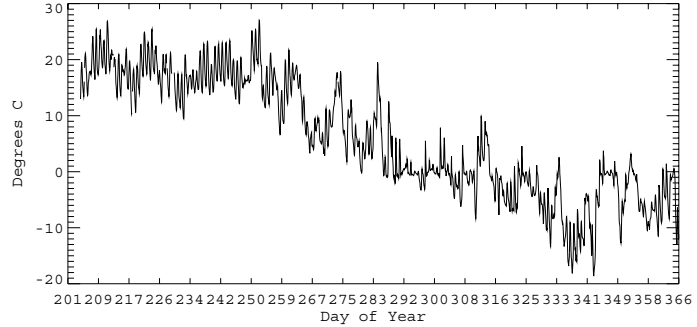
H. Lake 2002, Box: 2 Loc: 18 Tree: 136 Sp: SM DBH: 41.9000



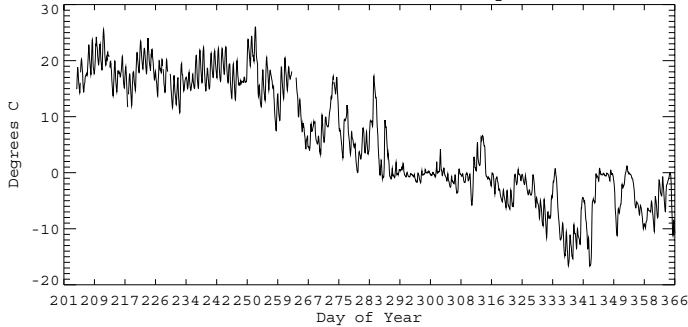
H. Lake 2002, Box: 2 Loc: 7 Tree: 220 Sp: SM DBH: 73.5000



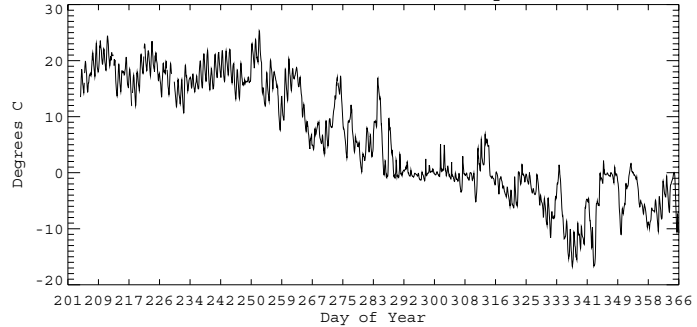
H. Lake 2002, Box: 1 Loc: 13 Tree: 11 Sp: YB DBH: 10.4000



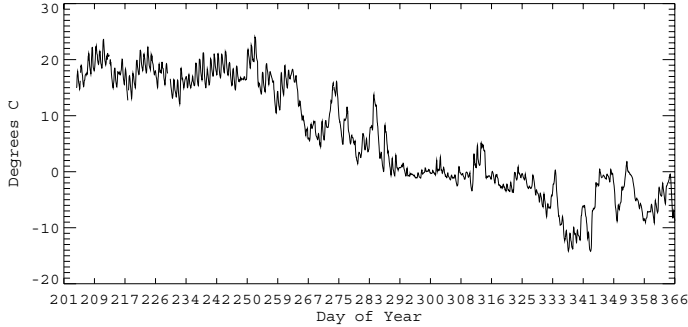
H. Lake 2002, Box: 2 Loc: 12 Tree: 35 Sp: YB DBH: 19.5000



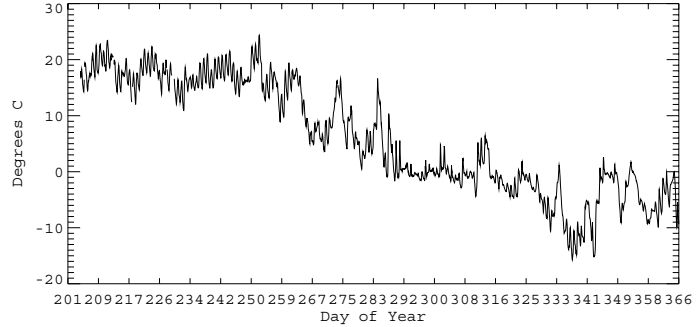
H. Lake 2002, Box: 1 Loc: 9 Tree: 14 Sp: YB DBH: 21.0000



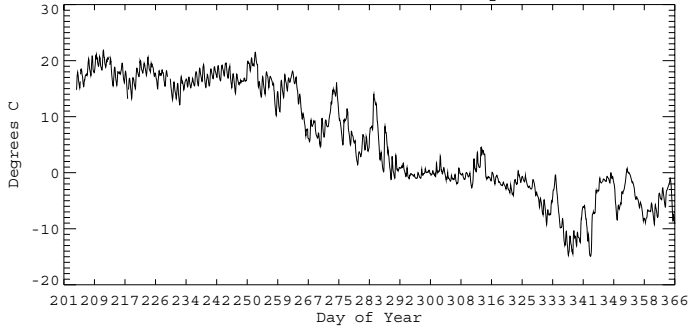
H. Lake 2002, Box: 2 Loc: 9 Tree: 37 Sp: YB DBH: 50.6000



H. Lake 2002, Box: 2 Loc: 24 Tree: 225 Sp: YB DBH: 54.4000



H. Lake 2002, Box: 1 Loc: 16 Tree: 8 Sp: YB DBH: 58.5000



H. Lake 2002, Box: 2 Loc: 22 Tree: 41 Sp: YB DBH: 69.2000

