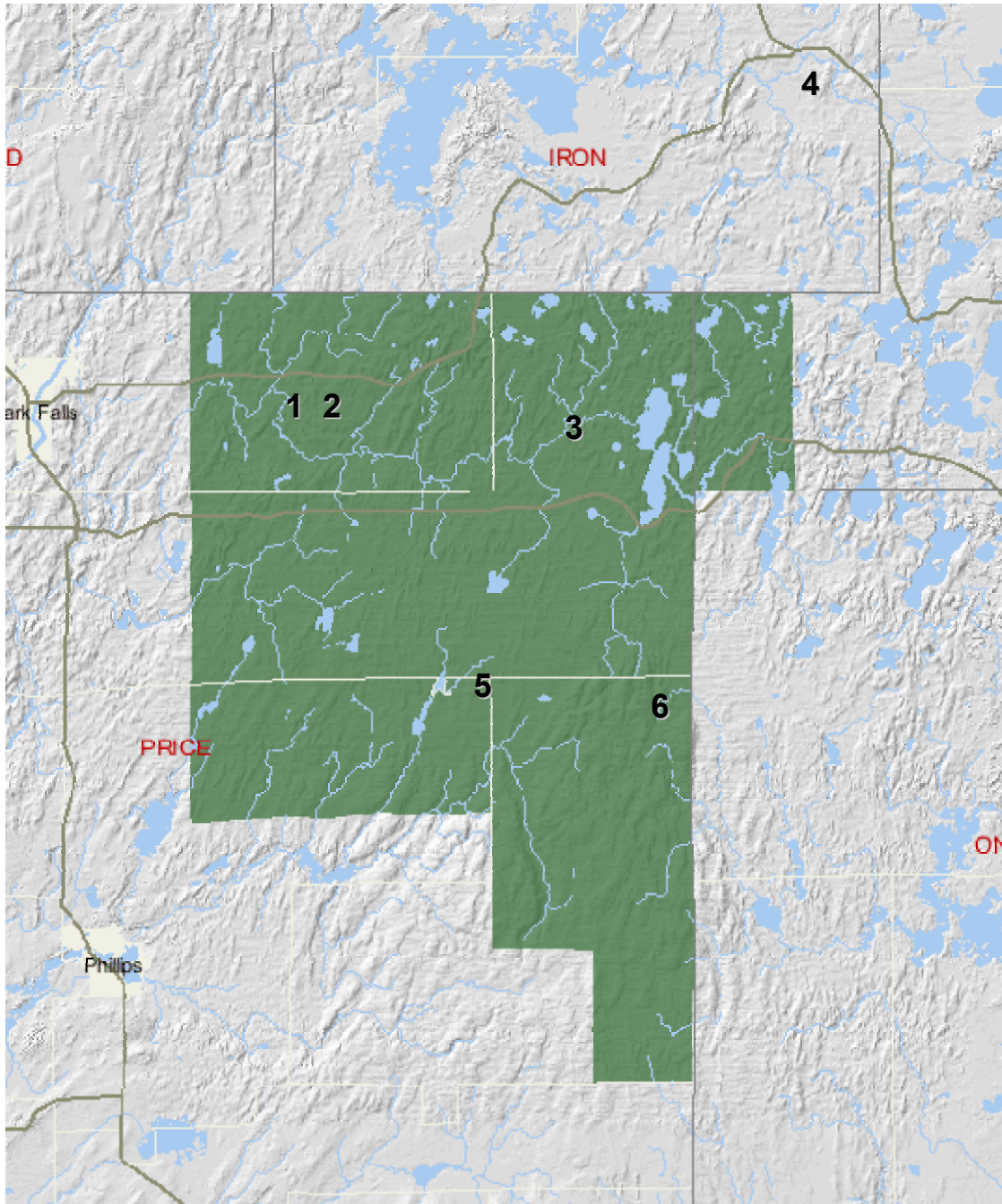


ChEAS Wetland Micromet Stations



Prepared by Bruce Cook

5 January 2006

GEOGRAPHICALLY ISOLATED WETLANDS (i.e., not associated with open water):

1) Alder-White Cedar Wetland

<http://cheas.psu.edu/data/micromet/alder>



2) Tamarac-White Cedar Forested Wetland

<http://cheas.psu.edu/data/micromet/wdepth>



3) South Fork Ericaceous Wetland

<http://cheas.psu.edu/data/micromet/wdepth>



RIPARIAN WETLANDS:

4) Lost Creek Alder-Willow-Sedge Wetland

<http://cheas.psu.edu/data/flux/lcreek>

<http://cheas.psu.edu/data/micromet/wdepth>



5) Wilson Flowage Wet Meadow

<http://cheas.psu.edu/data/micromet/wdepth>



SPRING-FED WETLAND:

6) Willow Spring Wet Meadow

<http://cheas.psu.edu/data/micromet/wdepth>

